



HEADQUARTERS

ITALY

FAAC SPA
Via Cador 19 - 40089 Zola Predosa (BO)
Tel. +39 051 81724 - Fax +39 051 798118
it.info@faacgroup.com - www.faacgroup.com

SUBSIDIARIES

AUSTRALIA

FAAC AUSTRALIA PTY LTD
Hemelbach - Sydney, Australia
tel. +61 2 97656544
fax +61 2 97659771
www.faac.com.au

AUSTRIA

FAAC GMBH
Stöbberg, Austria
tel. +43 662 8533900
fax +43 662 8532625
www.faac.at

FAAC TUBULAR MOTORS
tel. +49 30 90796945
fax +49 30 22490006
faacm.info@faacgroup.com

BENELUX

FAAC BENELUX NV/SA
Drooge, Belgium
tel. +32 50 200202
fax +32 50 202042
www.faacbenelux.com

FAAC TUBULAR MOTORS
Schapague 30
NL-6803 BA Vlodrop, Netherlands
tel. +31 475 406014
fax +31 475 406014
faacm.info@faacgroup.com
www.faacbenelux.com

CHINA

FAAC SHANGHAI
Shanghai, China
tel. +86 21 68182970
fax +86 21 68182608
www.faacgroup.cn

FRANCE

FAAC FRANCE
Siret Ernest - Jarcy, France
tel. +33 4 72218700
fax +33 4 72218701
www.faac.fr

FAAC FRANCE - AGENCE PARIS
Masny - Paris, France
tel. +33 1 69191020
fax +33 1 69191021
www.faac.fr

FAAC FRANCE - DEPARTEMENT VOLETS
Saint-Denis de Plevé - Bordeaux, France
tel. +33 5 57551890
fax +33 5 57472970
www.faac.fr

GERMANY

FAAC GMBH
Freilassing, Germany
tel. +49 8654 488175
fax +49 8654 488175
www.faac.de

FAAC TUBULAR MOTORS
tel. +49 30 90796945
fax +49 30 22490006
faacm.info@faacgroup.com
www.faac.de

INDIA

FAAC INDIA PVT. LTD
Noida - Ghaziabad, India
tel. +91 120 3984108/4199
fax +91 120 4212132
www.faacindia.com

IRELAND

NATIONAL AUTOMATION LTD
Co. Roscommon, Ireland
tel. +353 71 968390
fax +353 71 968390
www.na.ie

MIDDLE EAST

FAAC MIDDLE EAST FZE
Dubai-Sheikh Rashid Operation Center - Dubai, UAE
tel. +971 4 3724190
fax +971 4 3724191
www.faac.ae

NORDIC REGIONS

FAAC NORDIC AB
Forsrup, Sweden
tel. +46 435 779500
fax +46 435 779529
www.faac.se

POLAND

FAAC POLSKA SP. Z O.O.
Warszawa, Poland
tel. +48 22 8141432
fax +48 22 8142024
www.faac.pl

RUSSIA

FAAC RUSSIA
Moscow, Russia
www.faac.ru

SPAIN

FAAC SA
San Sebastián de los Reyes - Madrid, Spain
tel. +34 91 6913112
fax +34 91 6910050
www.faac.es

SWITZERLAND

FAAC AG
Allmend, Switzerland
tel. +41 41 8713400
fax +41 41 8713484
www.faac.ch

UNITED KINGDOM

FAAC LTD
Basingstoke - Hampshire, UK
tel. +44 1256 318100
fax +44 1256 318101
www.faac.co.uk

U.S.A.

FAAC INTERNATIONAL INC
Jacksonville, FL, U.S.A.
tel. +1 904 4888952
fax +1 904 4889588

FAAC INTERNATIONAL INC
Fullerton, California - U.S.A.
tel. +1 714 446 9800
fax +1 714 446 9898
www.faacusa.com



Extreme flexibility and optimisation of logistics

One single model controls passages with a net width from 2 m to 6 m. Its modular beams make the B680H a product which is easy to manage and handle.

Full visibility and control of traffic

The programmable integrated flashing traffic light connector guarantees perfect regulation of traffic, while the LED beam lights adequately signal closing of the passage even under conditions of poor visibility.



B680H: new 24V hydraulic barrier.
Innovation in action.



B680H
Four ways
to be unique.

Safe performance and reliability

The B680H has a Hybrid heart which, together with its "everlasting" springs, allows it to exceed 2,000,000 cycles of continuous-use, raising 8 m beams in less than 6 seconds, in total safety, thanks to the reverse on contact feature.

Removable housing

The B680H has an internal load-bearing structure and an external removable housing. This design gives the system great stability and permits easy replacement of the housing.

All rights reserved. All trademarks are the property of their respective owners. FAAC, the FAAC logo and B680H are trademarks of FAAC Group. All other trademarks are the property of their respective owners.

It has no equals but itself.

Switching power supply

The switching power supply, with high energy efficiency and extended range, ensures operation of barriers from 100 Vac to 240 Vac, protecting them from any changes in voltage occurring with non-optimal power-supply systems.

Integrated flashing traffic light

The flashing traffic light is entirely integrated into the structure, so it cannot be damaged. The operation of its red and green high-efficiency LEDs may be programmed by the board.

Elliptically-profiled modular beams

The longest beams are obtained joining two modules up to a maximum of 8.3 m (a net gate area width of 8 m) to ease transportation. Once the modules have been assembled, the connection joint is invisible and LED lighting may be fixed to the entire length of the bar. All the beams are windproof, round or elliptically profiled and are supplied with rubber protection on the bottom.

INTELLIGENT SOLUTIONS

- Designed so that accessories can be fixed to the housing
- Simple, guided mechanical setup
- Automatic control board setup with just 2 steps
- Control board with transparent box fixed to the upper part of the barrier
- DIN bar already fitted and space for further accessories
- Few part numbers
- Modular beams
- Retrocompatible with foundation plate of FAAC 620 and 640 barriers

Integrated absolute encoder

Absolute encoder kit for complete control of movement and reversing of beam when an obstacle is detected: this ensures that the impact curve can be respected, ensuring that pedestrian passages also comply with safety standards.

"Everlasting" springs

The springs of the B680H have been designed to exceed 2,000,000 cycles.

24V Hybrid heart

The hydraulic pump with brushless motor permits the movement of long or short beams at high speed and continuous cycle (100% duty cycle).

Backup batteries

Installing the XBAT 24 module (high-performance Nickel-Metal Hydride batteries), including battery charger, ensures the operation of the B680H even during a black out.

Sophisticated electronics with integrated Loop Detector

The E680 microprocessor control board ensures integration of the B680H with complex control systems. It has numerous programmable outputs and inputs and a connector for GSM, Ethernet and Wi-Fi modules. Two integrated, high-sensitivity Loop Detectors ensure the containment of system costs.

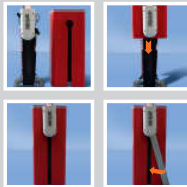
Removable housing

The housing is non load-bearing and may be easily replaced, with the upright post remaining in place. It is available in stainless-steel or steel versions, with the innovative, 100-micron, epoxy zinc primer anti-corrosion treatment, with four colours available.

Easy to assemble: once the upright has been fitted, with the pocket and the beam, the housing simply needs to be lowered onto it and fixed to the base. If the housing should ever need replacing, simply remove the fixing bolts and pull it up, with no need to dismantle the entire barrier.



2.3 m in less than 1.5 seconds
8.3 m in less than 6 seconds



Personality beyond any standards.



Aluminium Grey RAL 9006



Pure White RAL 9010



Flame-Red RAL 3000



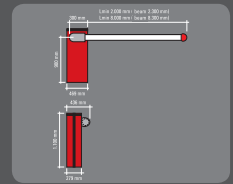
Steel Blue RAL 5011



Stainless-steel

DIMENSIONS AND TECHNICAL SPECIFICATIONS

Power supply	100 - 240 Vac (50/60 Hz)
Electric Motor	36 Vdc Brushless
Absorbed power	240 W
Rated motor	11 A (230 V)
Motor rotation speed	1,000 ± 6,000 RPM
Pump capacity	3.2 l/min (max)
Electronic deacceleration	Absolute encoder
Operating ambient temperature	-20°C + 55°C
Weight	85 kg (68 kg body + 17 kg components)
Oil type	FAAC HP OIL
Barrier body treatment	Epoxy zinc anti-corrosion treatment 100 microns + paint
Protection class	IP44
Beam type	Round or elliptical with lights and rubber bumper
Dimensions (LxHxD) (mm)	469x279x110 (see illustration)



ACCESSORIES



■ Pocket for round pivoting beams



■ Connecting kit for round S-profile beams (max. 4 m)



■ Pocket and balancing spring S



■ Pocket and balancing spring L



■ Integrated, flashing traffic light



■ Skirt kit, length 2 m for round S/L profile beams



■ End foot for round S/L profile beams



■ XBAT 24 emergency battery kit



■ Anti-vandalism valve for the B680H. It protects the hydraulic system if the beam is forced.



■ Anti-spacis group. Permits manual release of the beam in case of a black out.

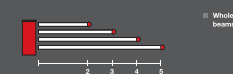


■ Beam break-out sensor for round pivoting beams

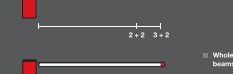
BEAMS



■ Whole beams S



■ Modular beams S



■ Whole beams L



■ Modular beams L

Dimensions shown in m.