



NABCO Glass Fitting Accessories



Floor Spring



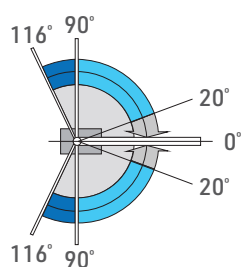
NFH-100



NFH-150

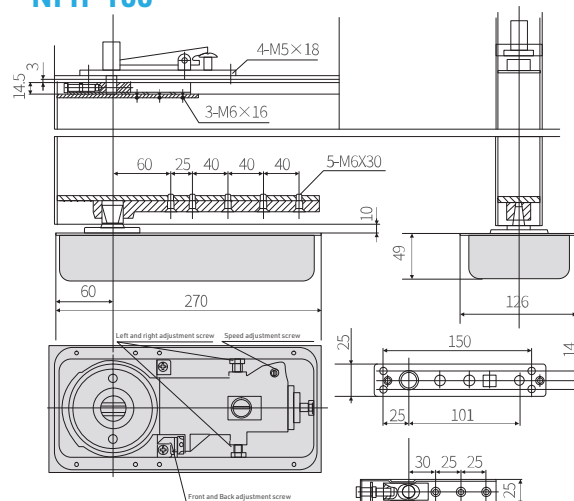


NFH-220

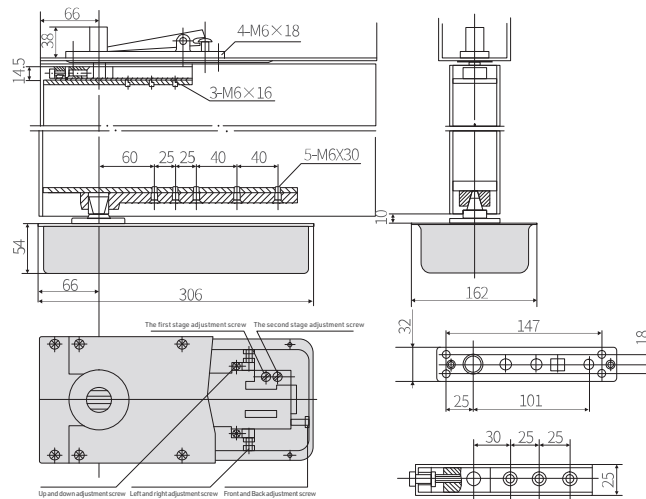


- Buffer Zone
- Back to closed position Area

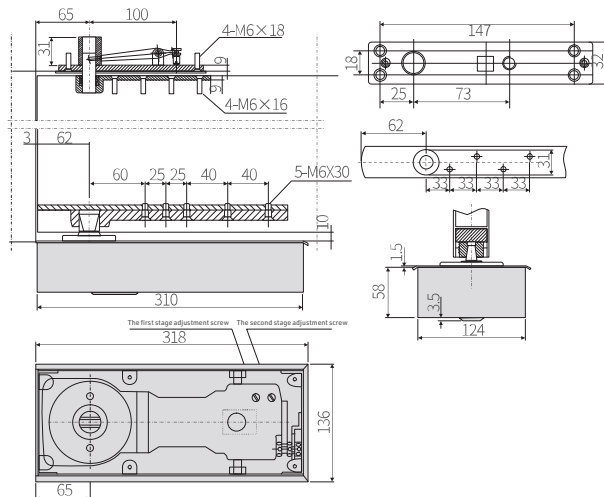
NFH-100



NFH-150

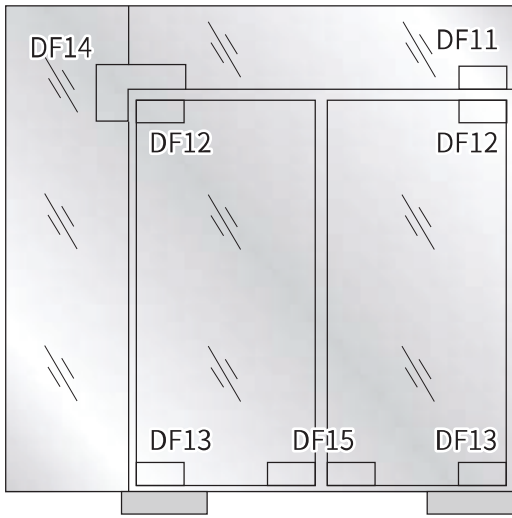


NFH-220



Type	NFH-100	NFH-150	NFH-220
Applicable Door Width	800-900mm	1000-1150mm	1200-1400mm
Max. Door Weight	100kg	150kg	220kg
Dimensions	270*126*49mm	306*162*54mm	310*124*58mm
Features	For single and double action doors Universal application Concealed installation Hold open Independent swinging and latching speed adjustment		

Patch Fitting



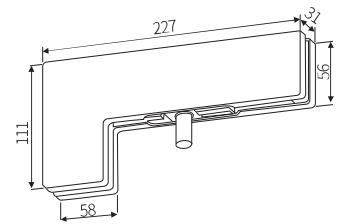
Features

1. High- quality stainless and aluminum alloy protecting cover.
2. Well-designed and prying-resistant.
3. Long life: one million time operation test.
4. Applicable for glass with thickness of 10-12mm (It will be designed separately if the glass thickness is 15-19mm).
5. Gasket made from special oxidation-resistant materials.
6. Finishing: Mirror, Hairline & Titanium Gold.



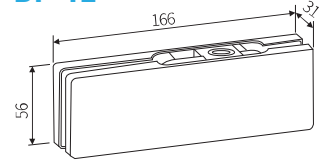
DF-14
Transom Patch Fitting

DF-14



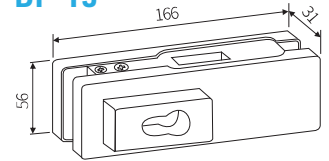
DF-12
Upper Patch Fitting

DF-12



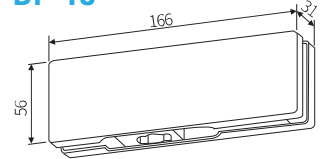
DF-15
Lock Patch Fitting

DF-15



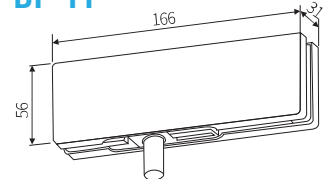
DF-13
Bottom Patch Fitting

DF-13



DF-11
Top Patch Fitting

DF-11



Door Closer Door Lock

Door Closer

Type	NDC-100
Applicable Door Width	800-900mm
Max. Door Weight	100kg
Standard	EN5



Floor Door Lock

Type	NDL-12
------	--------



Mortise Lock

Type	NDL-11
------	--------



Applications



Qingdao North Railway Station



Shanghai No.6 People's Hospital



Beijing U-Tang Life Plaza

Nabtesco

Nabco AutoDoor(Beijing)Co.,LTD.

2F Liandong International Industrial Park, No.15 Jingsheng
South Fourth Street, Tongzhou District, Beijing, P.R. China
Post Code: 101102
Tel: +86-10-60503958
Fax: +86-10-60503968

<http://www.nabco.cn>

Shanghai Branch

Room 1707, Hongjia Tower, Nop.388 Fushan Road, Pudong
New Area, Shanghai, P.R. China Post Code: 200122
Tel: +86-21-33538556 Fax: +86-21-33536658

Guangzhou Office

Room 1701B, Poly-Plaza CloverPhase I, No.9 Huaqiang Road,
Tianhe District, Guangzhou, P.R.China Post Code: 510623
Tel: +86-20-38837824