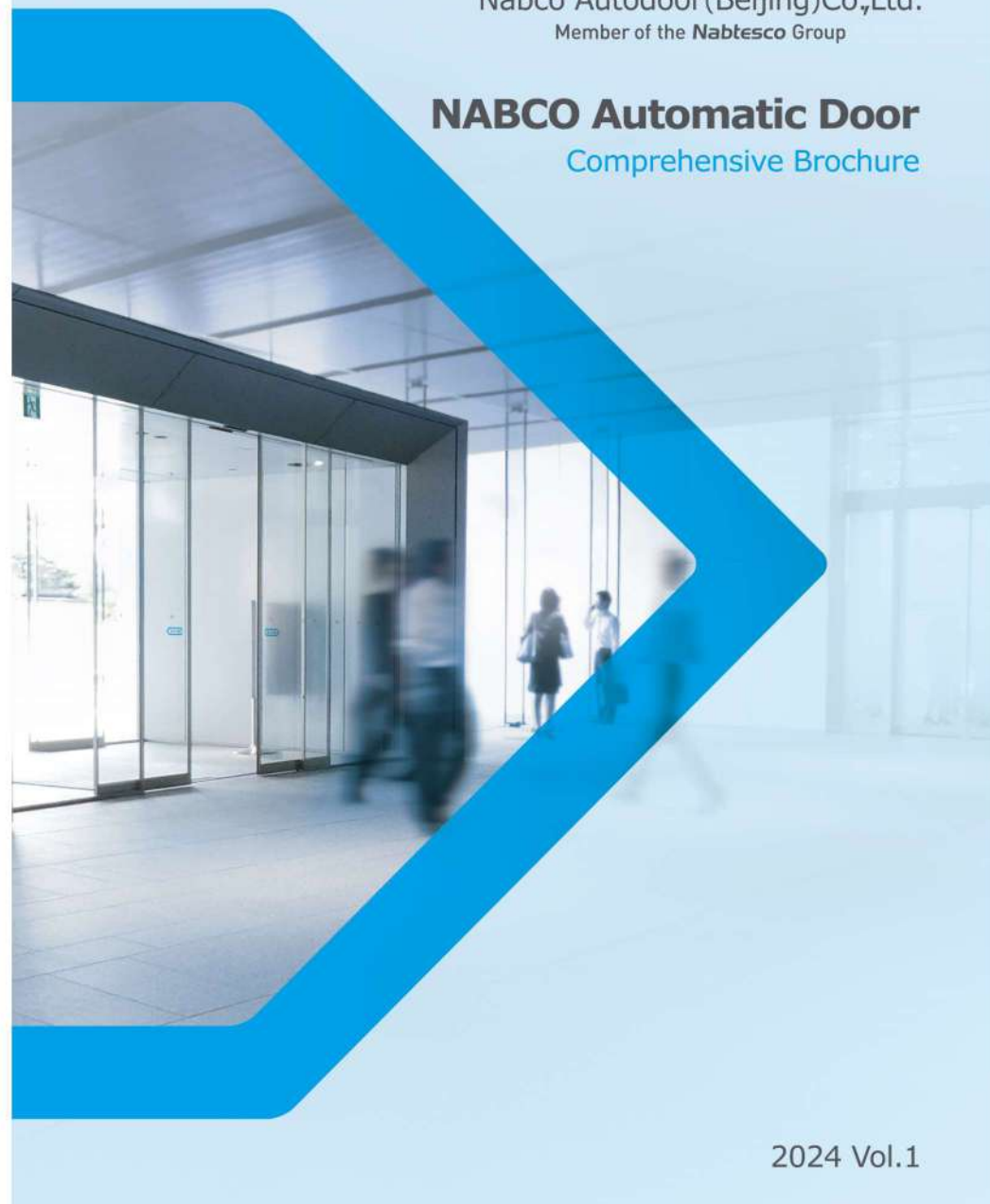




Nabco Autodoor(Beijing)Co.,Ltd.  
Member of the Nabtesco Group

## NABCO Automatic Door

Comprehensive Brochure



### Nabtesco

#### Nabco Autodoor (Beijing) Co., Ltd.

2F, Liando U Valley, No. 15, Jingsheng South 4th Street, Maju Bridge, Tongzhou District, Beijing  
Postcode: 101102  
Consulting hotline: 400 154 2734  
Tel: 010-6050 3958  
Fax: 010-6050 3968



<http://www.nabco.cn>

#### Shanghai Branch

Room 1707, Yuexiu Building, No. 388 Fushan Road, Pudong New Area, Shanghai  
Postcode: 200122  
Tel: 021-3353 8556

#### Guangzhou Office

No.9 Huaqiang Road, Zhujiang New Town, Tianhe District, Guangzhou  
1701B Zhongying Mansion, Poly Clover Square  
Postcode: 510623  
Tel: 020-3883 7824



2024 Vol.1

NABCO CATERS TO THE NEEDS OF THE TIMES, AND CREATES VARIOUS KINDS OF ENTRANCE SPACE.



## Nabco Auto door Creating Comfortable Urban Building Environment

The high developed information and communication system as well as the change and development of industry and society have become the main reasons for changing the business environment and living environment, and the continuous creation of new comfortable space is required for buildings and cities. What's more, automatic doors that provide people with easy and comfortable passage conditions have become an indispensable special function of buildings.

NABCO is a Japanese company with a long history of producing automatic doors, which brings more comfort and convenience to buildings through automatic doors, and achieves excellent results in all aspects based on its unique technology.

NABCO automatic doors are configured with a rich product line covering various fields. Taking the high-quality automatic doors for hallway for example, it includes the creative automatic door for interior decoration, the automatic door with barrier-free and safety features and the automatic doors with disaster-prevention and earthquake-prevention functions. Its industrial products range from oversized automatic doors for giant aircraft hangars to shielding doors for atomic power station.

Moreover, for the automatic door that can be widely used in stores and buildings, based on the consistent concept of automatic door system development and design, NABCO designs high-performance automatic doors with built-in microcomputer control function, and even develops automatic door sensors with advanced technologies.

ナブコ × トラスト = ナトラス  
**NABCO × TRUST = NATRUS**

With customer trust as the first, and based on continuous improvement of technology and quality, and continuous pursuit of safety performance, NATRUS was born.



**Granted ISO9001, ISO14001 & ISO45001 certification**

Respond to customer trust with the world standard quality system.

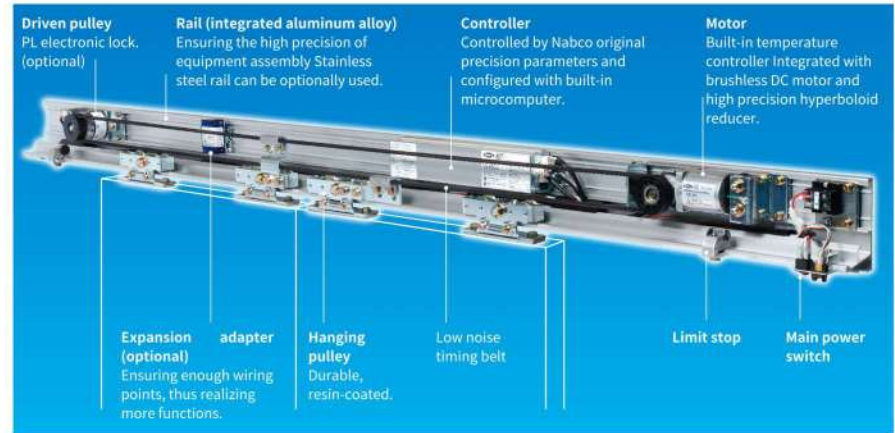


# Contents

	Sliding Door Series	NATRUS-VS (60,85,150,250), DS 500	4
	GT1175BO-FO	Automatic Emergency Evacuation Door	9
	GT1175BO-TP	Telescoping Automatic Emergency Evacuation Door	11
	GT1175BO-FO (SLM)	Thin-frame Automatic Emergency Evacuation Door	13
	GT1175B0 (M) -FO	Super-high Automatic Emergency Evacuation Door	14
	GT-8300	Heavy Automatic Side-hung Door (interior)	15
	GT-8400	Heavy Automatic Side-hung Door (exterior)	16
	GT-710	Automatic Side-hung Door	17
	GT-10	Automatic Side-hung Door	18
	GT-5 Series	Balance Door	19
	GT-6 Series	Buried Side-hung Door	20
	GT-1400	Automatic Folding Door	21
	MM Series	Automatic Magnetic Suspension Door	22
	NAX	Automatic Airtight Door	23
	MD	Automatic Medical Door	26
	HDC	Multi-functional Automatic Bathroom Door	27
	TTL	Triple Automatic Sliding Door	28
	NAL Reinforced Type	NAL-VS	29
	NCL Fine Type	NLC-VS	30
	Quick Passage Door	Quick Passage Door	31
	CS2A Series	Two-wing Revolving Door	33
	RL Series	Three/Four-wing Revolving Door	34
	SSJ-A	Three/Four-wing Crystal Revolving Door	35
	Automatic Sliding Door	Curve Automatic Sliding Door, Double Automatic Sliding Door	36
	Peripheral Products	Abundant Peripheral Accessories	37
	Patent Certificates	Complete Test Report and Patent Certificate	41
	Photos	Key Installation Sites of Nabco Autodoor	42
	Operation and Maintenance	Safety Requirements for Automatic Doors	46

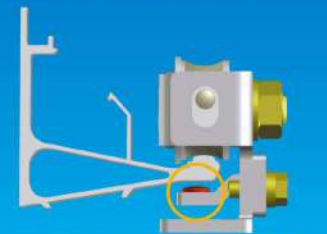
## Automatic Sliding Door

### NATRUS-VS Series



※ Core components are imported with original packaging from Japan, so the quality can be ensured. Hyperboloid reduction gear is adopted, providing strong durability and stable operation.

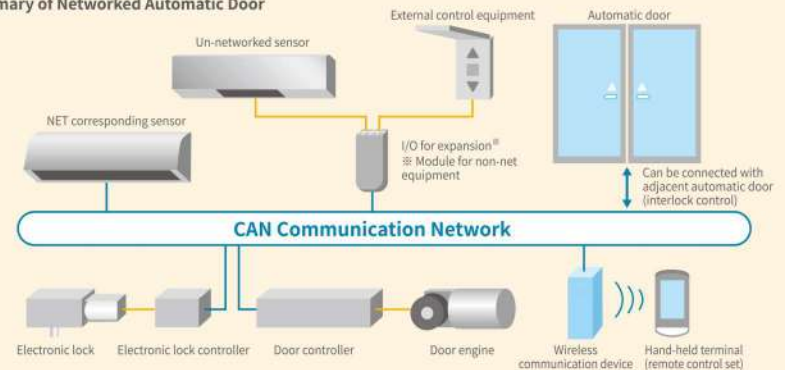
#### Anti-derail Performance Improved



#### Soft Resin



#### Summary of Networked Automatic Door



※ CAN, the abbreviation of controller area network, is a kind of network technology implementing ISO international standard. It was originally developed as on-board LAN for lightweight cars, and now because of its accredited reliability and convenient fault detection function, it has attracted much attention in a wide range of fields, such as industrial equipment and medical equipment and so on. All components adopt CAN communication connection, thus realizing clear understanding of operation situation.

## NATRUS-VS Series Automatic Sliding Door

1. Core components are imported with original packaging from Japan, so the quality can be ensured.
2. High-power brushless DC motor is adopted, ensuring longer service life.
3. Hyperboloid reduction gear is adopted, providing strong durability and stable operation.
4. All components adopt CAN communication connection, thus realizing clear understanding of operation situation.
5. Remote monitoring is configured, realizing one-button easy operation.



A Complete Range of Automatic Doors, Suitable for Light Doors to Large Building Doors

From the VS-60 for light doors under 60kg to the VS-250 for heavy doors that can drive a single horizontal sliding door up to 500kg, all products meet the needs of various sectors of society with superb quality and superior performance.

### Be Able to Ensure the Ground Flatness of Doorway Passage (Note 1)

By increasing the strength of structure bearing door body, it is possible to maintain the ground flatness without installing the ground rail. In this way, the problems such as garbage accumulation, water accumulation or icing in the ground guide rail slot are easily solved. (excluding VS-250 type)

Note 1) The Specification List in the following table applies to the cases within the maximum applicable area of the door body, and is based on the strength of door body supporting structure. However, due to the different strength of the door frame, sometimes it is still necessary to set the ground rail. What's more, we hope that it is better to set the ground rail for the automatic door that is often affected by strong wind.

Device Model	Double-leaf Sliding				Single-leaf Sliding			
	VS-60SL	VS-85SL	VS-150SL		VS-60SL	VS-85SL	VS-150SL	
	N/F/S/HM	N/S/HM	F		N/F/S/HM	N/S/HM	F	
Maximum applicable door body								
Single door weight (kg) × leaf quantity <sup>(1)</sup>	60×2	85×2	120×2	150×2 <sup>(2)</sup>	75×1	100×1	120×1	150×1 <sup>(2)</sup>
Single door width (DW) (mm)	650-2500							
Single door DH/DW <sup>(3)</sup>	< 4							
Average opening and closing speed	< 0.4							
Required power capacity	AC220V·5A							
Standard wind speed <sup>(4)</sup>	< 15m/s							

(1) Only F type (VS-150F15) is selectable for the single door weighing 120-150kg. N type, S type and F12 type are suitable for the single door less than 120kg.

(2) Don't exceed the allowable value of a single door weight when used. Otherwise, the fault and accident may be caused.

(3) The DH/DW ratio of single door body should be controlled within the permissible range. Otherwise, the specified performance cannot be guaranteed.

(4) The bearable wind speed during operation varies depending on the door area and other conditions. Especially in strong wind occasions, please negotiate in details.

## VS-60SL N/S/HM/F

### Nabco Door Motor Developed on the Basis of Comfort

It is suitable for aluminum door frames in shops, indoor partition doors and other light automatic doors, ensuring smooth opening and closing. Besides, it is featured with advanced design with both high performance and miniaturization.

## VS-85SL N/S/HM/F

### Middle-grade Automatic Door for Office Building, Realizing High-grade Free Access

This type is the standard automatic door device, which is most suitable for medium-sized reinforced glass doors and doors with frame of various materials, with the wide application range from ordinary shops to general buildings.

## VS-150SL N/S/HM/F

### Elegant Gates Used in Large Buildings, Which Can Drive Door Body with A Mass of 150kg

This type of automatic door device can be used to realize the free opening of a single door body weighing 90-150kg. In case of the 12mm thick reinforced glass door, the single size can be W1219mm×H2438mm, which is suitable for buildings and halls requiring large doors.

N (internal-mounted) — This is a device for small cross-section (100×170mm) trapezoidal style installation, which is suitable for stainless steel and other types of door frames.

F (internal-mounted) — Since it belongs to the type of bearing large door body, please use it for the matching door body.

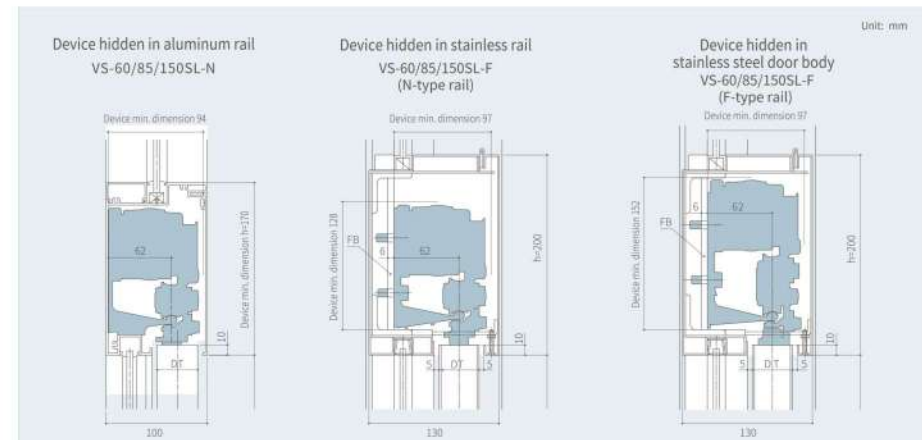
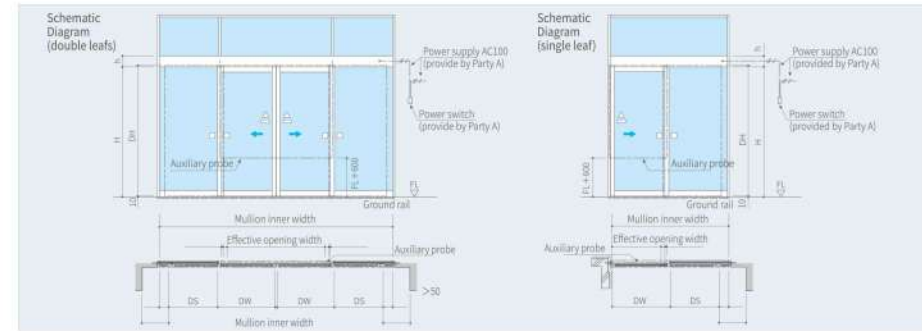
S (external-mounted) — This type of device is mounted on the surface or wall of a variety of door beams and is widely used, which is the best choice when transforming manual door into automatic door.

### Highly Sensitive Control Device and Superior Drive Capability

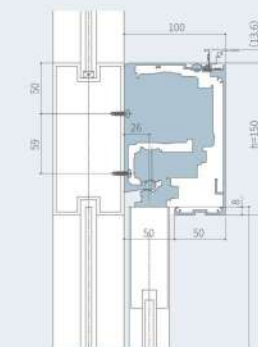
High performance and miniaturization are developed synchronously, ensuring advanced design. The microcomputer device equipped with Nabco automatic door advanced control software is built in the main controller. Besides, the durable brushless DC motor provides enough power, thus providing people with comfortable and unlocked enjoyment.

### High-strength Suspension Structure

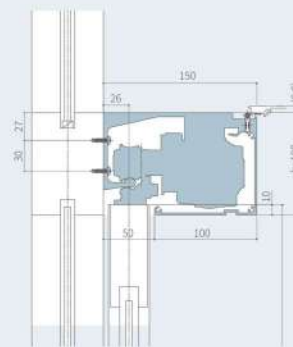
The strong aluminum alloy die-cast operating base and high-strength rail, coupled with the anti-derail hanging pulley greatly strengthen the supporting structure of door body. This product is featured with excellent durability.



### Other Devices Installed Outside Frame VS-60/85/150SL-S



### 100mm Devices Installed Outside VS-60/85/150SL-HM







**VS-250 SL**  
Heavy Duty Automatic Sliding Door

### Small Size, But with Super Driving Force

The extra-heavy door body, installed in broad access areas, can drive super-heavy tall door body and decorative door body. It is suitable for double-leaf sliding doors with single leaf less than 250kg and single-leaf sliding doors with the maximum weight of 500kg.



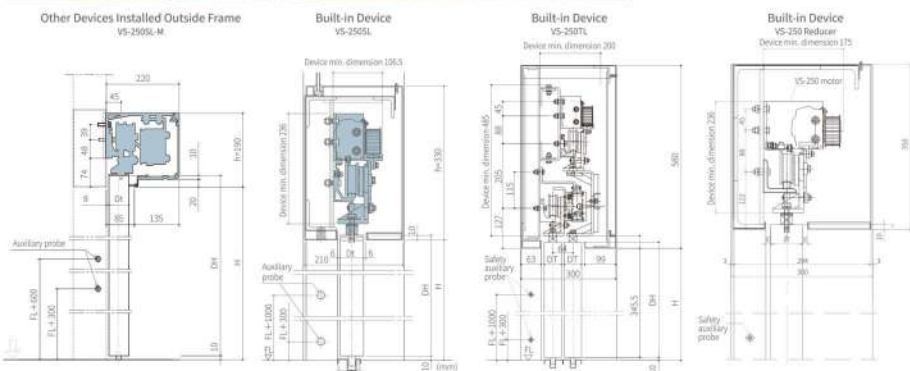
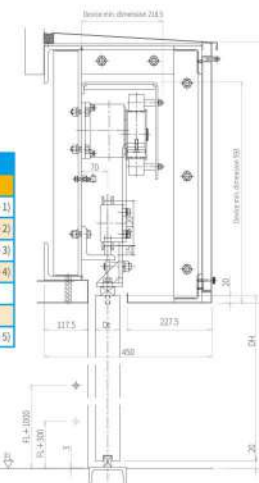
**DS-500**  
Heavy Automatic Sliding Door

### Automatic Door Device Which Can Drive Extra Large Weight

It is suitable for double-leaf sliding doors with single leaf less than 500kg and single-leaf sliding doors with the maximum weight of 1 ton. After being equipped with the reducer, it can deal with the single-leaf sliding doors with the maximum weight of 2 tons.



Built-in Device DS-500



Device Model	Double-leaf Sliding		Telescoping Double Doors		Double-leaf Sliding		Single-leaf Sliding	
	VS-250 SL	VS-250 TL	VS-250 TL	VS-250 TL	VS-250 reducer	VS-250 reducer	VS-250 reducer	VS-250 reducer
Maximum applicable door body								
Single door weight (kg) × leaf quantity	250 × 2	500	165 × 4	325 × 2	350 × 2	700 × 1	(Note 1)	
Single door area (DW × DH) (m <sup>2</sup> )	Max 5	Max 5	Max 3.5	Max 7	Max 6	Max 8	(Note 2)	
Single door width (DW) (mm)	900 ~ 2705	1200 ~ 3100	1000 ~ 1650	1000 - 2000	1000 - 2500	1000 - 4500	(Note 3)	
Single door DH/DW	Max 3.0	Max 3.0	Max 3.0	Max 3.0	Max 3.0	Max 3.0	(Note 4)	
Average opening and closing speed	<0.4m/s	<0.4m/s	<0.45m/s	<0.45m/s	<0.22m/s	<0.22m/s		
Required power capacity	AC 220V · 5A	AC 220V · 5A	AC 220V · 5A	AC 220V · 5A	AC 220V · 5A	AC 220V · 5A		
Standard wind speed	<15m/s	<15m/s	<15m/s	<15m/s	<15m/s	<15m/s	(Note 5)	

(Note 1) Don't exceed the allowable value of a single door weight when used. Otherwise, the fault and accident may be caused.  
 (Note 2) Don't exceed the allowable value of a single door area when used. Otherwise, the fault and accident may be caused. In addition, the indoor door that is not affected by wind pressure is not so strict in the allowed area. Please specify the service conditions when ordering.  
 (Note 3) The width of the single-leaf door body is the standard applicable size. If the wide-body door is to be used, please consult the production possibility and delivery date.  
 (Note 4) The DH/DW ratio of single door body should be controlled within the permissible range. Otherwise, the specified performance cannot be guaranteed.  
 (Note 5) The bearable wind speed during operation varies depending on the door area and other conditions. Especially in strong wind occasions, please negotiate in details.

Device Model	Single-leaf Sliding	Double-leaf Sliding	Single-leaf Sliding (reducer)	Double-leaf Sliding (reducer)
	DS-500	DS-500	DS-500	DS-500
Single door weight (kg) × leaf quantity	1000 × 1	500 × 2	2000 × 1	1000 × 2
Single door area (DW × DH) (m <sup>2</sup> )	Max 27.4	Max 13.9	Max 45.4	Max 27.4
Single door width (DW) (mm)	1200 ~ 6100	1200 ~ 3100	1200 ~ 10100	1200 ~ 6100
Single door DH/DW	Max 3	Max 3	Max 3	Max 3
Average opening and closing speed	0.1 ~ 0.45m/s	0.1 ~ 0.45m/s	0.1 ~ 0.25m/s	0.1 ~ 0.25m/s
Required power capacity	AC 220V 6A	AC 220V 6A	AC 220V 6A	AC 220V 6A
Standard wind speed	<15m/s	<15m/s	<15m/s	<15m/s

(Note 1) Don't exceed the allowable value of a single door weight when used. Otherwise, the fault and accident may be caused.  
 (Note 2) Don't exceed the allowable value of a single door area when used. Otherwise, the fault and accident may be caused. In addition, the indoor door that is not affected by wind pressure is not so strict in the allowed area. Please specify the service conditions when ordering.  
 (Note 3) The width of the single-leaf door body is the standard applicable size. If the wide-body door is to be used, please consult the production possibility and delivery date.  
 (Note 4) The DH/DW ratio of single door body should be controlled within the permissible range. Otherwise, the specified performance cannot be guaranteed.  
 (Note 5) The bearable wind speed during operation varies depending on the door area and other conditions. Especially in strong wind occasions, please negotiate in details.

# Automatic Emergency Evacuation Door



## Product Features

- Under the action of 110N thrust, both the movable door and fixed door can be opened 90°;
- Full-profile frame, with no need of additional external frame, which is more beautiful;
- Light weight, convenient installation and high traffic efficiency;
- After the movable leaf is slid open, it can also be pushed to both sides, so as to achieve a larger door opening width;
- At ordinary times, it is automatic sliding door that can be opened freely and comfortably. Its door body can be opened to 2 times of the original width as needed, which can strongly facilitate carrying large items or holding large-scale events.

## High-performance Automatic Emergency Evacuation Door

- Suitable for hospitals, subways, train station, hotels, high-end shopping malls, supermarkets, 4S stores and other high traffic areas, and can be quickly opened and closed;
- Be configured with reliable safety system;
- Layout significantly affected by the traffic pattern (one-way VS two-way);
- Be granted with ANSI/BHMA A156.10 US market mandatory certification.

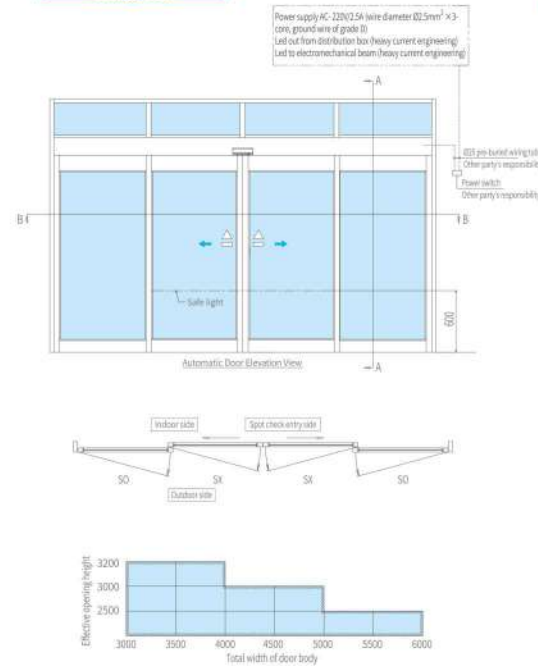
## GT-1175BO-FO Automatic Emergency Evacuation Door

Details		
Item	Standard	Options
Door leaf material	Aluminum profile	-
Glass material	Tempered glass	Laminated glass, hollow glass
Glass thickness (mm)	10	12/25
Starting probe	NH-203	Optional
Safe light	NP-01 (1 piece)	NP-01 (2 piece)
Electronic lock	-	Optional
Manual lock	-	Optional
Surface treatment	Silver oxidation	Coating, non-ferrous oxidation
Mullion (mm)	54	102
Upper frame (mm)	Movable 102/Fixed 165	-
Lower frame (mm)	102	254
Transom (mm)	-	51/102/204, 1 piece ~
Longitudinal frame (mm)	44×114	51×178
Abatjour	-	Optional
Ground rail	Arrangement of fixed leaf position	Full length arrangement

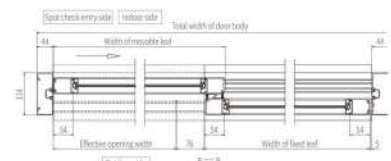
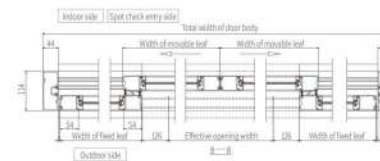
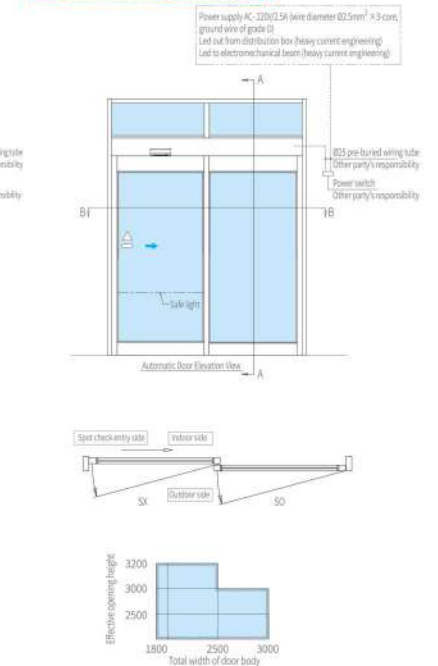
Notes: 1. When the width of movable leaf is greater than 1370mm, or its weight is more than 90kg, the supporting wheel needs to be installed at the bottom of door leaf.  
2. When the width of the door leaf is greater than 1500, the transom has to be added.



## Side-by-side Automatic Sliding Door



## Single-leaf Automatic Sliding Door - Left & Right Handed



## Technical Parameters of Single Door

No.	Standard Dimensions				
	Total width of door body	Effective opening width	Maximum evacuation width	Width of movable leaf	Width of fixed leaf
01	2000	829	1797	1013	951
02	2500	1079	2297	1263	1201

## Technical Parameters of Double Door

No.	Standard Dimensions				
	Total width of door body	Effective opening width	Maximum evacuation width	Width of movable leaf	Width of fixed leaf
04	3000	1203	2682	785	723
02	3500	1453	3182	910	848
03	4000	1703	3682	1035	973
04	4500	1953	4182	1160	1098
05	5000	2203	4682	1285	1223







**GT1175BO-FO(SLM)**  
Slim frame Automatic

**Product Features**

1. Thin frame is used, which is more elegant.
2. Surface anode oxide film, ensuring durable performance;
3. Be equipped with brushless motor system, ensuring the running of drive system;
4. Double brush, insulated from outside temperature;
5. Be equipped with sensor system, conforming to ANSI 156.10, thus improving the security.

**Application Example**

- Suitable for hospitals, subways, train station, hotels, high-end shopping malls, supermarkets, 4S stores and other high traffic areas, and can be quickly opened and closed;
- Be configured with reliable safety system;
- Layout significantly affected by the traffic pattern (one-way VS two-way);
- Be granted with USA ANSI/BHMA A156.10 certification.

**GT-1175-FO(SLM) Thin-frame Automatic Emergency Evacuation Door**

Details		
Item	Standard	Options
Door leaf material	Aluminum profile	-
Glass material	Tempered glass	Laminated glass
Glass thickness (mm)	10	12
Starting probe	NH-203	Optional
Safe light	NP-01 (1 piece)	NP-01 (2 piece)
Electronic lock	-	Optional
Manual lock	-	Optional
Surface treatment	Silver oxidation	Coating, non-ferrous oxidation
Mullion (mm)	25	-
Upper frame (mm)	Movable 90/Fixed 153.5	-
Lower frame (mm)	150	-
Transom (mm)	-	51/102/204, 1 piece -
Longitudinal frame (mm)	44×114	51×178
Abat-jour	-	Optional
Ground rail	Full length arrangement	-



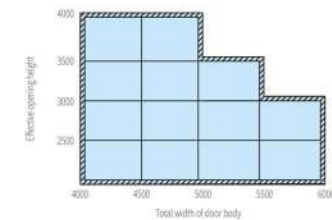
Notes: 1. When the width of movable leaf is greater than 1370mm, or its weight is more than 90kg, the supporting wheel needs to be installed at the bottom of door leaf.  
2. When the width of the door leaf is greater than 1500, the transom has to be added.



**GT1175BO(M)-FO**  
Super-high Automatic  
Emergency Evacuation Door

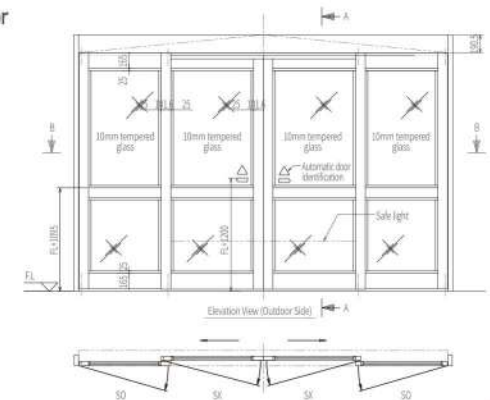
**Product Features**

1. Be configured with highly rigid aluminum alloy frame;
2. The effective opening height up to 4m;
3. Can be stably opened 90° even if the door body is 4 meters high;
4. Can strongly facilitating carrying large items or holding large-scale events.



**GT-1175BO(M)-FO Super-high Automatic Emergency Evacuation Door**

Details		
Item	Standard	Options
Door leaf material	Aluminum profile	None
Glass material	Tempered glass 10mm	-
Glass thickness (mm)	10	12
Safe light	NP-01 (1 piece)	NP-01 (2 piece)
Electronic lock	Without	With
Manual lock	Without	With
Surface treatment	Silver oxidation	Coating, non-ferrous oxidation
Mullion (mm)	102	-
Upper frame (mm)	Movable 102/Fixed 165	Without
Lower frame (mm)	165	-
Transom (mm)	1 pcs	Quantity optional
Longitudinal frame (mm)	51×178	-
Abat-jour	Without	Without
Ground rail	Arrangement of fixed leaf position	Full length arrangement





## Heavy Automatic Swing Door (Flat bar mounted)



**GT-8300**  
Heavy Automatic Swing Door  
(Flat bar mounted)



Unequal Double Door

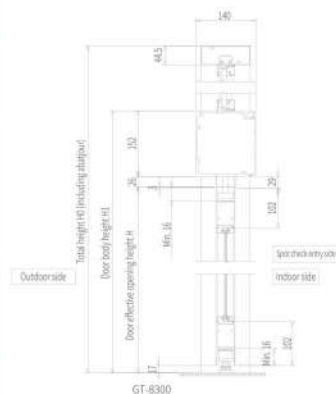
### Product Features

1. Equipment imported from USA, ensuring the quality;
2. Strong driving force, super typhoon resistance;
3. Equipment installed internally, no connecting lever exposed after the door closed, ensuring elegant appearance;
4. Be equipped with microelectronic controller, ensuring smooth and efficient operation;
5. For double door, one leaf opened inwards and the other outwards can be realized automatically; In case of emergency, both leaves can be opened manually in the evacuation direction.
6. Conforming to ANSI 156.10, and be granted with USA UL, ULC and CSFM certification.

### Application Example

- All access doors of hospital and nursing home;
- Barrier-free facility doors;
- Airports;
- Shopping malls & supermarkets.

Details		
Device Model	2 Sets of GT-8300	1 Set of GT-8300
Type of Door Body Opening or Closing	Double door (two leafs * 90° opening)	Single door (one leaf * 90° opening)
Single leaf weight X leaf quantity	Standard type	150 × 2
	Extra-heavy type	(151~250) × 2
Electromechanical beam length (mm)	Standard type	>1841
	Transformer externally installed (controller built in)	1637~1840
	Transformer and controller both externally installed	1359~1636
Single Door Area: DW × DH (m <sup>2</sup> )	MAX 4.5	
Door thickness: DT (mm)	44	
Function in case of power failure	Manual opening ~ automatic closing	
Outline dimension of device	W940 × H152 × D148	
Surface color of device	Silver	
Average opening and closing speed	~35°/s	
Required power capacity	AC 220V • 5A	AC 220V • 2.5A



## Heavy Automatic Swing Door (Surface-mounted)



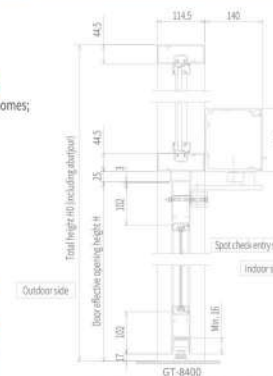
**GT-8400**  
Heavy Automatic Swing Door  
(Surface-mounted)

### Product Features

1. Equipment imported from USA, ensuring the quality;
2. Strong driving force, super typhoon resistance;
3. Without changing the original manual door, it can be easily changed into an automatic sliding door, ensuring very simple construction.
4. Be equipped with microelectronic controller, ensuring smooth and efficient operation;
5. For double door, one leaf opened inwards and the other outwards can be realized automatically; In case of emergency, both leaves can be opened manually in the evacuation direction.
6. Conforming to ANSI 156.10, and be granted with USA UL, ULC and CSFM certification.

### Application Example

- All access doors of hospitals and nursing homes;
- Barrier-free facility doors;
- Airports;
- Shopping malls & supermarkets.



Details			
Device Model	2 Sets of GT-8400	1 Set of GT-8400	
Type of Door Body Opening or Closing	Double door (two leafs * 90° opening)	Single door (one leaf * 90° opening)	
Single leaf weight X leaf quantity	Standard type	150 × 2	
	Extra-heavy type	(151~250) × 2	
Electromechanical beam length (mm)	Inward opening	Standard type	>1765
		Transformer externally installed (controller built in)	1560~1764
		Transformer and controller both externally installed	1295~1559
	Outward opening	Standard type	>1880
		Transformer externally installed (controller built in)	1675~1879
		Transformer and controller both externally installed	1410~1674
Single Door Area: DW × DH (m <sup>2</sup> )	MAX 4.5		
Door thickness: DT (mm)	44		
Function in case of power failure	Manual opening ~ automatic closing		
Outline dimension of device	W940 × H152 × D148		
Surface color of device	Silver		
Average opening and closing speed	~35°/s		
Required power capacity	AC 220V • 5A	AC 220V • 2.5A	



### NH-201 Auxiliary Inductor

It is installed on the opening side of door leaf, which can prevent the collision caused by the door opening to the people standing in front of the door.



## Swing Door



### GT-710

Swing Door



### Product Features

1. Core components are imported from USA, so the quality can be ensured;
2. Door opens automatically after pushing (pulling) it gently;
3. After loosening, it still can remain open for a while, and the wheelchair also can easily pass through it.
4. In the case that the door body cannot be easily opened, it can be opened by a switch installed at a certain distance.
5. In case of power failure, it can be opened manually, and then the door body can closed silently and automatically.
6. It can easily transform the existing manual sliding door into automatic door.
7. Conforming to ANSI 156.10, and be granted with USA UL, ULC and CSFM certification.

### Application Example

- All access doors of hospitals;
- Nursing homes
- Barrier-free facility doors

Details		
Device Model	2 Sets of GT-710	1 Sets of GT-710
Type of Door Body Opening or Closing	Double door (two leafs * 90° opening)	Single door (one leaf * 90° opening)
Single leaf weight (Kg) × leaf quantity	90 × 2	90 × 1
Maximum applicable door	Single Door Area: DW × DH (m <sup>2</sup> )	Max. 2.6
	Single door width (DW) (mm)	813~1219 (Min. 762)
	Single door thickness (mm)	30-50 (Please make negotiation if outside this scope)
Reference	12mm tempered glass door: DW × DH (mm)	1067 × 2134
	6mm framed glass door: DW × DH (mm)	1000 × 2100
Assisting function	Push the 10cm door to open automatically with 29.4N force	
Function in case of power failure	Manual opening ~ automatic closing	
Outline dimension of device	W880 × H158 × D145	
Surface color of device	Silver, tawny	
Average opening and closing speed	~35°/s	
Required power capacity	AC 220V • 3A	AC 220V • 1.5A

Note: When used in outdoor sites, it is affected by wind pressure. Therefore, the performance indicators listed above are not applied.



## Swing Door



### GT-10

Swing Door

### Product Features

- Suitable for both left and right opening, provide a variety of functions, and easy to use;
- A wide range of options to provide customized and automated solutions;
- Highly consistent components, ensuring reliability and less maintenance;
- Electromechanical drive device, ensuring the silent and stable operation of automatic door;
- Drive mechanism with low energy consumption and full power, can be used in a variety of applications;
- Ensure that the automatic door can remain fully open or fully closed in the case of high wind based on its unique wind compensation characteristics;
- Switzerland NABCO imported equipment with good reliability.



The LCD display integrated with the drive mechanism can provide the user with initial startup guidance. No additional external



The lighting program selection button and the main control switch are integrated into the side cover, ensuring the intuitive operation.



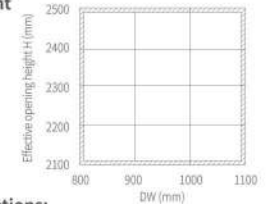
Standard support arm: can be optionally installed on the beam or door leaf according to different site conditions.



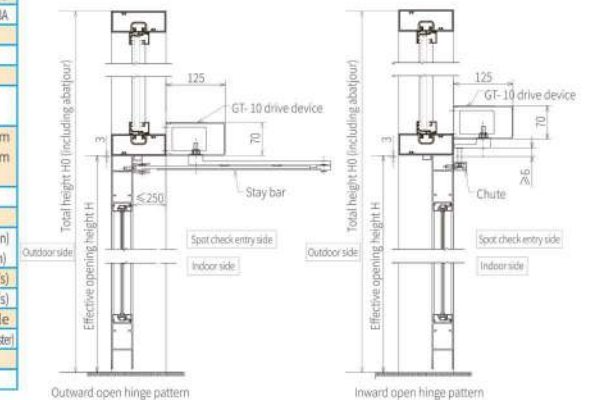
Sliding support arm: automatic side-hung door drive with sliding arm and push/pull function, which is a kind of common and ornamental building solutions.

Product information	
Drive device	Standard
Power transfer	Standard support arm Sliding support arm
Drive device dimensions	70mm height
	730mm width 125mm depth
Drive device weight	8.2 kg
Environment temperature	-15...+50 °C
May only be used in dry rooms	Maximum RH 85 %
Level of protection	IP 20
Working voltage	230 VAC (+10/-15 %), 50 Hz
Power supply provided by the customer	230 VAC (+10/-15 %), 50 Hz, 10/13A
Drive device power	max. 350 W
Motor rated power	100W
Supplied external power	24VDC (±10 %), 1.4 A
Shaft output torque	Fixed value = 56 Nm
	Max. value = 165 Nm
Lintel depth	Standard bar: max. 250 mm
	Sliding bar: pl -50/+150 mm ps -50/+150 mm
Door opening angle	Max. 105°
Door weight	Max. 150kg
Door width	730...1100 mm (lintel installation)
	800...1100 mm (door installation)
Opening speed	2.4...20s adjustable (Max. 40°/s)
Closing speed	2.4...20s adjustable (Max. 40°/s)
Force close scope (no power supply)	≈ 10...15° non-adjustable
Force close buffer (no power supply)	Stepless adjustable (control the fine adjuster)
Open holding time	0...60s
Night open holding time	0...180s

Note: single door body weight < 150kg.



### Installation & assembling options:



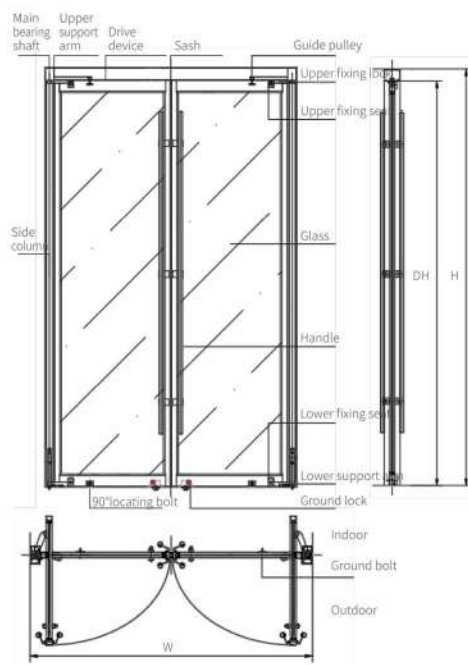




**GT-5 Series**  
Balance Door

### Product Features

- The door opening force is only about half of that of the ordinary manual doors, especially in windy occasions, the easy-to-push performance is more obvious.  
(Compared with the [hardware series] products produced by Nabco.)
- The balance door can be used to replace the spring door, and its door body can be positioned after opening 90 degrees, which is more convenient when evacuating people.
- The opening path of the door is elliptical, and the door body will not occupy a lot of space after opening.
- Its structure is very safe, thus the risk of injury caused by door falling down due to ground decline is greatly reduced.
- Since the combination form of its door body is free, it can be installed independently as the entrance of buildings, and also can be used with the automatic door.
- The surface decoration of the door body is diversified, which can meet the requirements of different customers.
- There is no need to groove on the ground, so its site construction is relatively simple.



### GT-Z Balance Door

Balance Door Model	Applicable Door Weight (kg)	DW (mm)		Max. DH (mm)	Min. Door (mm)
		Single Door	Double Door		
GT-Z5150	150	1100	2200	3000	760
GT-Z5200	200	1250	2500	4000	760
GT-Z5400	400	1500	3000	4500	900
GT-Z5500	500	1800	3600	4800	900

### GT-B Balance Door

Balance Door Model	Applicable Door Weight (kg)	DW (mm)		Max. DH (mm)	Min. Door (mm)
		Single Door	Double Door		
GT-B5150	150	1100	2200	3000	900
GT-B5300	300	1250	2500	4000	900
GT-B5500	500	1800	3600	4800	900



**GT-6 Series**  
Operator Underground Type Automatic Swing Door

Details		
Device Model	GT-610	GT-620
Equipment Dimension	296 × 132 × 84mm	358 × 184 × 108mm
Controller dimensions	45 × 64 × 350mm	45 × 64 × 350mm
Weight	6.5kg	11.5kg
Axis distance	70mm	110mm
Max. door weight	150kg	250kg
Max. door width	900mm	1100mm
Max. output torque	70Nm	120Nm
Max. power	35W	55W
Opening angle	45~135°adjustable	
Opening direction	Open to the left or right; single door: one-way 90° open, double door: one-way 90° open	
Level of protection	IP67	
Standby power	W6W	
Operating temperature	-40~85°C	
Noise	≤60dB	
Power supply	220V ± 10%, 50Hz	
Safe return sensitivity	10 gears adjustable	
Closing pressing force	10 gears adjustable	
Opening/closing slow-stop setting	20 gears adjustable	
Input port setting	Automatic open, normal open, inching open, inching close, etc.	
Opening/closing torque	24 gears adjustable	
Windproof mode	Can be set or manually switched	
Closing mode	Manual closing, automatic closing	
Protection mode	Lock release, access control, automatic reset	
Internal and external safety light curtain interface	Safety passing monitoring	
Dual computer linkage	The double-door linkage opening mode can be set through the linkage cable.	
Fire emergency input	Input contact	

### Product Features

The buried side-hung door makes use of the output shaft of buried motor to realize the automatic opening and closing of door body through the lower drive. Its opening and closing speed is 3-8s adjustable. The open holding time is 0-30s adjustable.

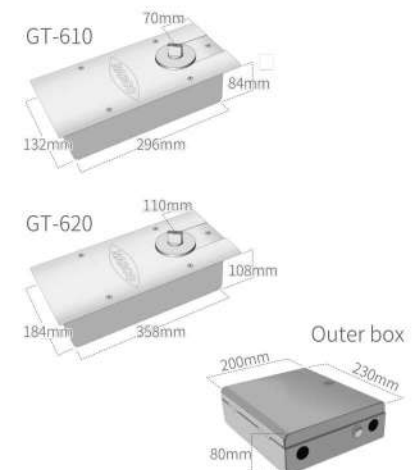
Mode selection:  
Manual open, manual close, magnetic lock, electric lock

Five open/close control modes:  
Automatic, normally open, manual open, normally close & one-way access

### Side-hung Door Devices



### Dimensions of Side-hung Door Devices





**GT-1400**  
Automatic Folding Door

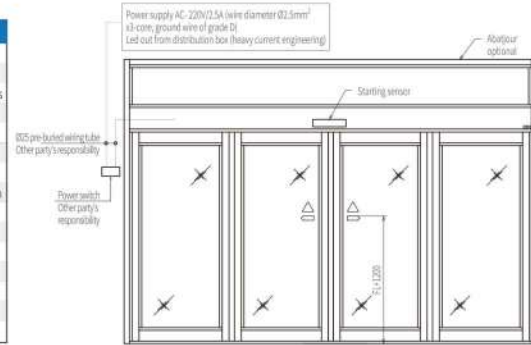
### Product Information

1. Cross-section dimensions of overhead beam:  
140mm width \* 190.5mm height
2. Movable leaf weight limit:  
Single door: <136kg  
Double door: <272kg
3. Opening and closing speeds both adjustable

### Product Features

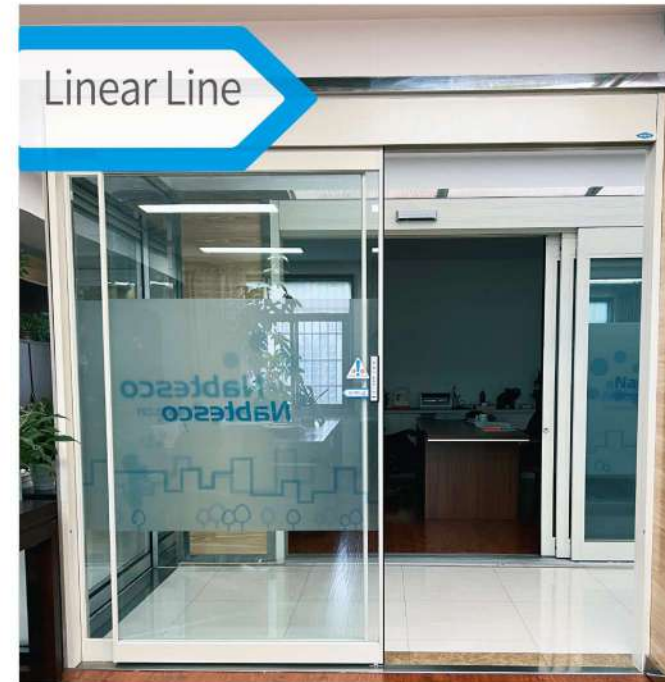
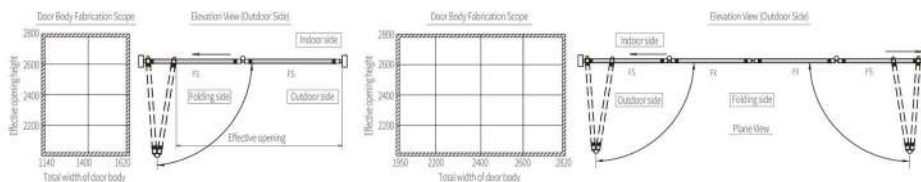
1. Equipment imported from USA, ensuring the quality;
2. Suitable for narrow passageways, can provide wide opening in limited space, ensuring easy access;
3. The hinge of door body is designed with anti-pinch structure to improve the safety of door body;
4. Have emergency opening function;
5. Conforming to ANSI 156.10, and be granted with UL, ULL, NAMI and FPA certification.

Details		
Item	Standard	Options
Door leaf material	Aluminum profile	-
Glass material	Tempered glass	Laminated glass, hollow glass
Glass thickness (mm)	10	12.6+12A+6
Starting probe	EAGLE6	Optional
Electronic lock	Without	With
Manual lock	Without	With
Surface treatment	Silver oxidation	Coating, non-ferrous oxidation
Mullion (mm)	54	-
Upper frame (mm)	102	-
Lower frame (mm)	102	-
Transom (mm)	Without	51/102/204
Longitudinal frame (mm)	60 × 140	-
Abatjour	Without	Optional
Ground rail	Without	Full length arrangement



Single Door Standard Dimensions				
No.	Total width of door body	Effective opening	Emergency outward opening width	Door leaf width
01	1140	762	918	470
02	1320	950	1100	561
03	1420	1050	1200	611
04	1520	1150	1300	661
05	1620	1250	1400	711

Double Door Standard Dimensions				
No.	Total width of door body	Effective opening	Emergency outward opening width	Door width
01	1950	1330	1632	425
02	2220	1603	1902	492
03	2420	1803	2102	543
04	2620	2003	2302	593
05	2820	2203	2502	643



**Linear Line**

### Product Features

1. Stable and silent opening or closing;
2. The door will open automatically after pushing it 2cm with hand;
3. Have excellent safety return function;
4. Can be easily opened in case of power failure;
5. If the door hits any person or obstacle during closing, it will immediately make a reverse motion.

### Application Example

- Office building
  - Meeting room, smoking room, office entrance
- Factory
  - Clean room, meeting room
- Hospital welfare facility
  - Living room, consultation room, multi-purpose toilet
- Residence Villa
  - Kitchen, study, children's room, toilet, underground audio-visual room

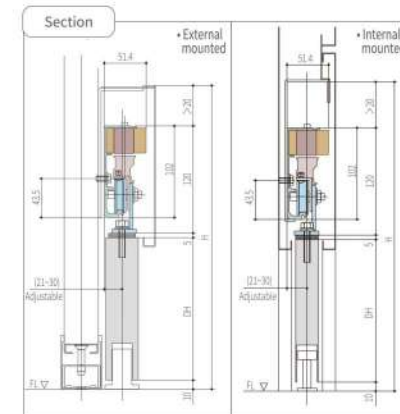
### Operation Principle Compared with Ordinary Automatic Doors

**Traditional Drive device**  
It makes the door connect to the belt, and then let the rotatory motor drive the belt to open or close the door. This kind of drivemode results to much friction points.

**Automatic Magnetic Suspension Door**  
The magnet and coil (electromagnet) integrated with the door belong to non-contact mode. In this case, the door is opened and closed through the attraction and repulsion of magnet and coil. This kind of drive mode results to less friction points.

Details	
Model	MM-80
Applicable door weight	20-80 kg/leaf
Body Weight	About 8kg
Power consumption	Average at the time of operation
	0.2Wh/time (door weight: 50kg/leaf)
Motor type	Permanent magnet linear motor
	40N when the stator is fully wound three times
Generated thrust	40N when the stator is fully wound three times
Required power capacity	AC100V ± 10% 50/60Hz Max-4A
Applicable door width	>70mm (more than 830mm in case of installing the electronic lock)
Operating temperature range	-10~40°C
Opening speed	0.2-0.5m/Sec (factory default 0.4m/Sec)
Closing speed	Fully automatic model: 0.2-0.5m/Sec (factory default 0.3m/Sec)
ON/OFF time	Multi-function model: 0.2m/Sec (fixed value)
	1-10 seconds, catch 0% OFF operation is performed when setting to the maximum value (factory default 5s)

© The weight will vary depending on the length of rail.





Nabco New Airtight Door with Air Tightness, Aesthetics and Safety



Nabco new airtight door is featured with **air tightness, aesthetics and safety**. NAX adopts unique **sinking embedded mechanism** to achieve high air tightness and meet the aesthetic and safety requirements of customers.

### Air tightness

- (Automatic door) Airtight performance (old Japanese specifications) JIS A 4702: Class A-4  
※ Equivalent to Chinese specifications GB/T 7106-2008 Class 8

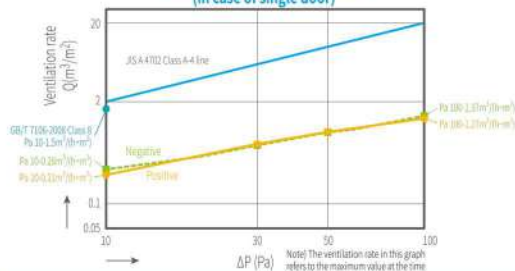
### Aesthetics

- Smaller electromechanical beam;
- Multiple kinds of panel selections and handle selections.

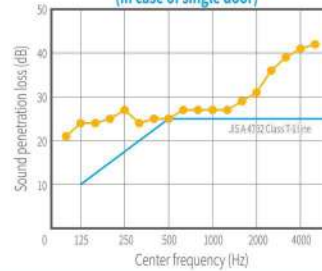
### Safety

- Not occupy effective passage opening, can be opened to the maximum degree without obstructing access;
- Can be opened easily with hand in case of power failure.

NAX Airtight Performance Graph  
(in case of single door)



NAX Sound Insulation Graph  
(in case of single door)



### Application Example

- **Operating room**  
Places with airtightness requirement
- **Radiotherapy room**  
Used for radioactive ray shielding door
- **Food factory**  
Used for HACCP
- **Warehouse · factory**  
Used for the places with air conditioning management
- **Meeting room**  
Places with silence requirement

## Nabco New NAX Airtight Door with Air Tightness, Aesthetics and Safety

### Panel Style of Automatic Door

Please select your preferred automatic door panel from the following two types.

Aluminum Alloy

Glass



### Detection Probe (optional)

Foot Switch



The door also can be opened or closed even if both hands are unable to provide operation.

Non-contact Sensor



The door opening and closing can also be realized with no need of touching it by hand.

### Manual Opening

Even in the case of power outage, you also can choose manual operation from the following 3 types.

### Recessed Pull Handle



### Handle



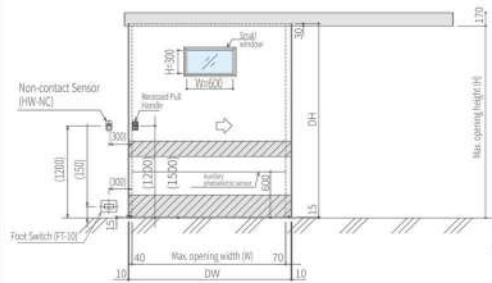
### Auxiliary Handle



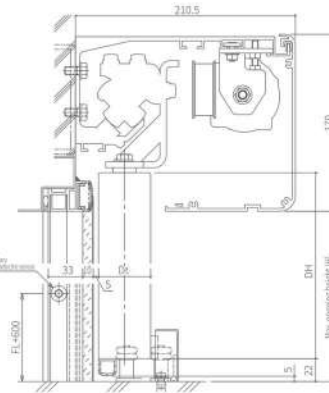
## Dimensions

### • Schematic Diagram

When the surface material is stainless steel and the door width is more than 1100, the panel splicing will be required.



### • Longitudinal Sectional



Unit: mm

## Details

Application		Airtight + sound insulation		Airtight + sound insulation + X-ray shielding	
Automatic door panel		Aluminum alloy/ Stainless steel/Glass		Aluminum alloy	Stainless steel
Open/Close automatic door		Single Door	Double Door	Single Door	Single Door
Max. opening width (mm)	Width (W)	700-2000	1200-2800	700-1600	700-1600
	Height (H)	1900-2500	1900-2500	1900-2500	1900-2500
Maximum applicable single door mass		220kg			
Opening speed		up to 0.7m/s			
Open holding time		Adjustable			
Operating temperature range		-10°C - 50°C			
Required power supply		220V AC±10% 50/60Hz (when Nabco special transformer is used)			
Power consumption		45Wh			
Operating humidity range		20% -85% RH			
Airtight performance		A-4 (JIS A 4702) ※ Equivalent to Chinese specifications GB/T 7106-2008 Class 8			
Sound insulation performance		T-1 (JIS A 4702)*1		T-1 (JIS A 4702)	
X-ray shielding performance		-		○ (lead plate 2mm)	
Electric lock		○			

\*1 The sound insulation performance of lass door body reaches the T-2 grade standard.

If it is required to make aluminum alloy and stainless steel door bodies also meet the T-2 standard, please contact the sales department.

\*2 As for "airtight + sound insulation + X-ray shielding", if the door larger than the specifications and dimensions is required, our company has to make special customization. Please contact the sales department.

## MD

Automatic Medical Door



## Product Features

- Smaller electromechanical beam, multiple kinds of handle for selection;
- Can be opened easily with hand in case of power failure, ensuring larger degree of opening; the embedded handle doesn't occupy effective passage opening or obstruct access;
- The whole door runs smoothly and quietly with good sound insulation both indoors and outdoors;
- The external electromechanical beam and door body are directly installed on the wall, ensuring quick and easy installation.

## Application Example

- Lead-protected operating room
- Food factory (used for HACCP)
- Warehouse - factory (used for the places with air conditioning management requirement)
- Meeting room (places with silence requirement)

## Medical Door

Device Model		Details				
Opening width (mm)	Width (W)	MD-S75	MD-S150	MD-SX1	MD-SX2	MD-SX3
	Height (H)	700-2000	700-2000	1000-1700	1000-1800	1000-1800
Applicable single door mass	Width (W)	100kg	150kg	250kg	350kg	500kg
	Height (H)	1900-2500	1900-2500	1900-2500	1900-2500	1900-2500
Opening speed		Average 0.4m/s				
Open holding time		Adjustable				
Operating temperature range		-10°C - 50°C				
Required power supply		220V AC ± 10% 50/60HZ (when Nabco special transformer is used)				





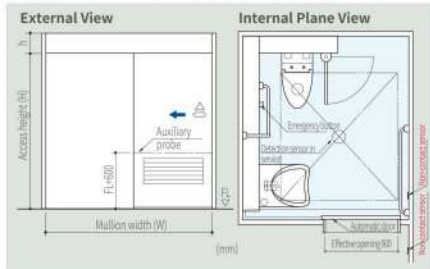
## HDC Barrier-Free Toilet Door

In order to facilitate the use of special groups such as those who need to take care of children and the disabled, it is recommended to use the hygienic and safe induction automatic door.

For the multi-functional bathroom automatic doors widely used in stations, hospitals, airports, hotels, shopping malls and many other places, on the premise of fully considering the concerns of users and managers, please choose the dedicated automatic door system.

- The disabled can easily solve the trouble caused by the door opening and closing;
- Be configured with voice prompt function, which provides more caring service;
- In the use of bathroom, the door is automatically locked, giving people a sense of security;
- Indoor lighting automatically on and off, with no need of turning on and off the light;
- There is operating status indicator outside the door for others to know the use condition;
- If the door is not closed after use, it will close automatically after the setting time;
- In order to prevent the door from being locked when the fault occurs, it is equipped with an automatic unlocking function;
- When the bathroom is used abnormally, the lock can be automatically released;
- If there are special circumstances, the door can be opened with administrator's key from the outside;
- There is an emergency button in the bathroom, and the back door is automatically unlocked when the abnormal signal is sent, so that the outside rescue can be successfully obtained.

※ The effective opening for wheelchair access is recommended to be more than 900mm.



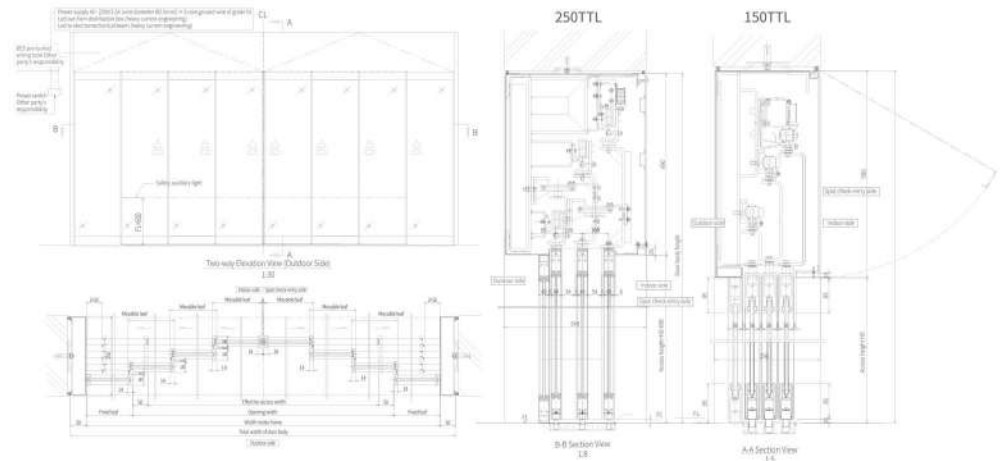
## TTL Telescopic Automatic Sliding Door

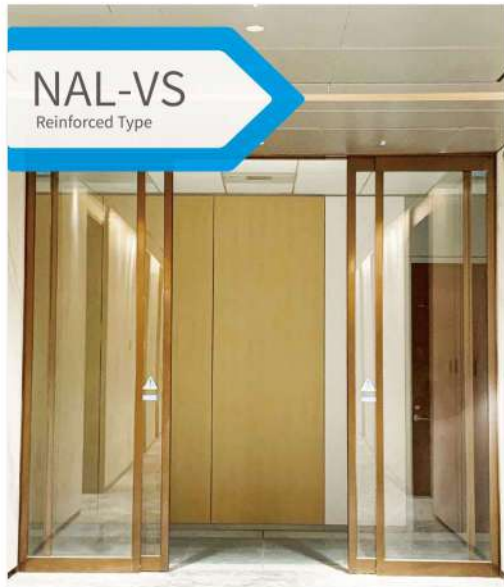


Device Model	VS-150	VS-250	VS-150	VS-250
Opening/closing type	Two-way three-leaf telescopic door		One-way three-leaf telescopic door	
Single door weight (KG) * leaf quantity	60×6	100×6	75×3	125×3
Single door area: D/W×D/H	max 1.6	max 3	max 2	max 3.5
Door width (mm)	600-850	600-1000	600-850	600-1000
Single door D/H/D/W	MAX 4	MAX 3	MAX 4	MAX 3
Average opening/closing speed	<0.35M/S	<0.45M/S	<0.35M/S	<0.45M/S
Required power capacity	AC220V, 2.5A	AC220V, 5A	AC220V, 2.5A	AC220V, 5A

### Product Features

1. Three movable leaves, ensuring more spacious access width;
2. Reducer mechanism is stable and reliable, ensuring smooth running and low noise;
3. Multiple kinds of specification, meeting different use scenarios.





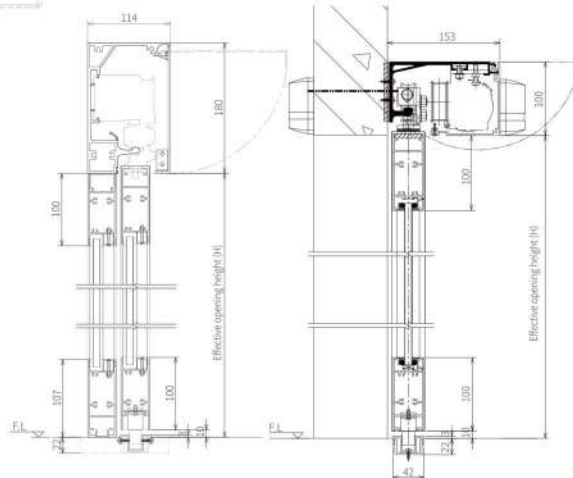
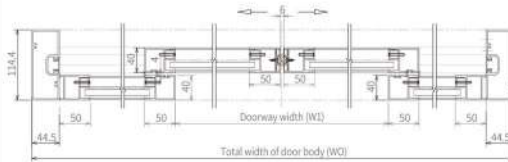
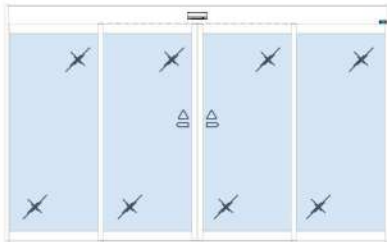
**NAL-VS**  
Reinforced Type

### Product Features

1. Nabco Japan imported equipment with a reinforced aluminum frame, providing more stable structure;
2. The high-strength sealing door structure is equipped with energy-saving sealing strips to effectively prevent the energy loss caused by indoor and outdoor air convection.
3. It can be equipped with Max.24mm insulating glass, which is more energy saving and heat retaining.



Remark: It only indicates the selection range when the glass thickness is 10mm, other calculation shall be performed in case of other thicknesses.



Item	Standard Configuration	Optional Configuration
Material	●	Aluminum profile
Door frame	●	50mm
Pillar	●	44.5×114
Ground rail	●	With
Glass material	⊙	Tempered (laminated/hollow)
Glass thickness	⊙	10mm (12mm/6mm+6mm/8mm+8mm/6mm+12A+6mm)
Starting probe	⊙	NH-2039 (multiple kinds for selection)
Safe light	⊙	NP-01(NP-80)
Surface treatment	⊙	Original material (can be coated)
Abatjour	⊙	Optional
Program switch	△	PGS-C/CL
Electronic lock	△	SKD-C
Manual lock	△	NDL-12
Emergency power supply	△	EBS

●Standard component ⊙Standard optional component △Optional component



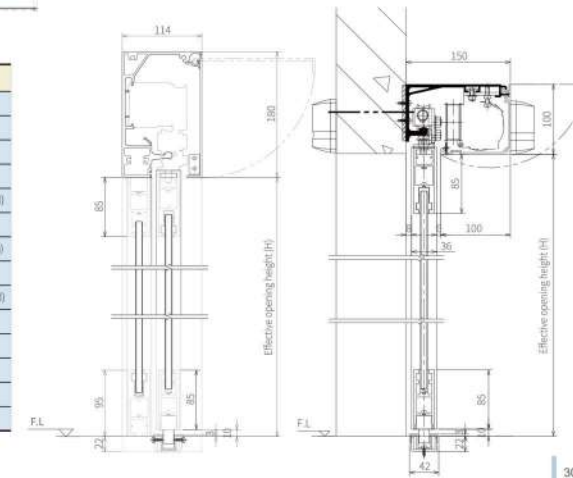
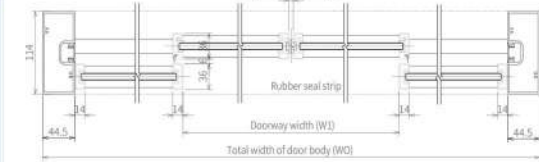
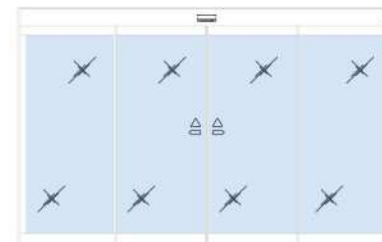
**NLC-VS**  
Fine Type

### Product Features

1. Nabco Japan imported equipment with classic Lusca profile, elegant ultra-thin frame and exquisite transparent appearance;
2. The high-strength sealing door structure is equipped with energy-saving sealing strips to effectively prevent the energy loss caused by indoor and outdoor air convection.
3. Light and handy profile components, ensuring convenient installation and high construction efficiency.



Remark: It only indicates the selection range when the glass thickness is 10mm, other calculation shall be performed in case of other thicknesses.



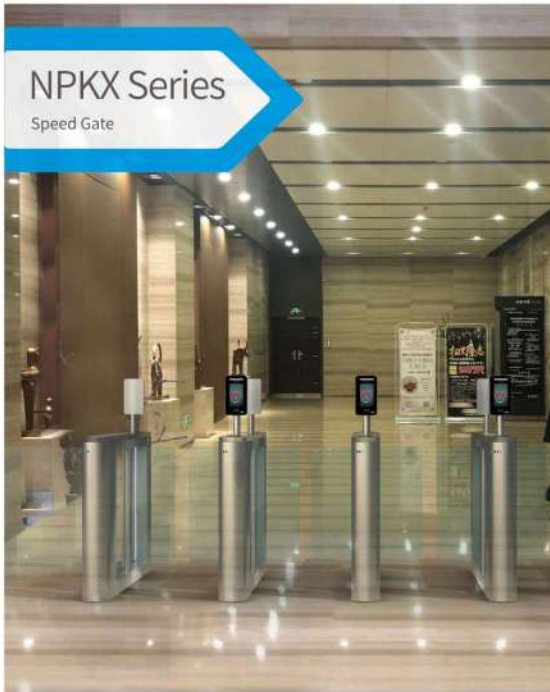
Item	Standard Configuration	Optional Configuration
Material	●	Aluminum profile
Door frame	●	14mm
Pillar	●	44.5X114
Ground rail	●	With
Glass material	⊙	Tempered (laminated optional)
Glass thickness	⊙	10mm (12mm/5mm+5mm)
Starting probe	⊙	NH-3038 (multiple kinds for selection)
Safe light	⊙	NP-01(NP-80)
Surface treatment	⊙	Original material (can be coated)
Abatjour	⊙	Optional
Program switch	△	PGS-C/CL
Electronic lock	△	SKD-C
Manual lock	△	NDL-12
Emergency power supply	△	EBS

●Standard component ⊙Standard optional component △Optional component



## NPKX Series

Speed Gate



Details	
<b>NPKX-1 thin frame</b>	
Chassis dimensions	1400 L × 155 W × 980 H mm
Passage width	600MM (customizable to 900MM)
<b>NPKX-2 thick frame</b>	
Chassis dimensions	1600 L × 200 W × 1025 H mm
Passage width	650MM (customizable to 950MM)
Input signal	Dry contact signal, TTL signal, or low-level pulse signal with pulses wider than 100 milliseconds
LED indicator board	4 pieces
Waterproof and dustproof grade	IP33 or above
Access speed	about 60 people/min (normally open) 40 people/min (normally closed)
Supply voltage	AC220 ± 10% V, 50HZ
Max. power	<120W
Motor	24V/30W
Communication interface	serial port/485 port
Operating temperature	-10°C ~ 60°C
Operating environment	indoor/outdoor (awning required)
Box material	304 national standard stainless steel
Shutter material	tempered glass, acrylic, etc.
Gate opening/closing time	less than 0.3S;
Whole device service life	continuous trouble-free opening and closing more than 5 million times
Operating frequency	Suitable for long-term use in high frequency places
Operating noise	<55dB

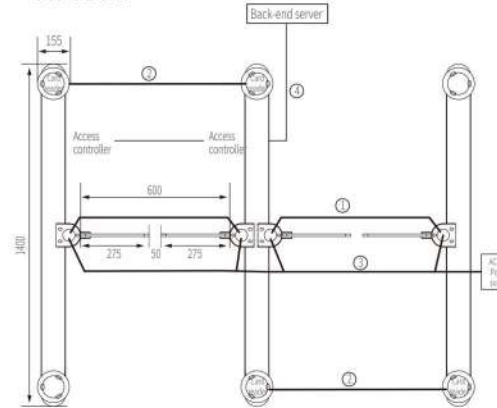
### Product Features

It is used for the access control and automatic ticket machine, such as airports, subways, libraries, office buildings, theaters, administration buildings, factories, scenic spots, stations, leisure and entertainment places and so on. The swing gate can realize the simple channel identification function, and solve the control problem of pedestrian access. The whole system runs smoothly with low noise and gentle buffer, which can be linked with all kinds of access control systems to meet the management needs of different owners, Such as face recognition, two-dimensional code, M1 card, barcode, fingerprint, ID and so on.

### NPKX-1



### NPKX-1



1. Gate synchronization cable: one 3-core cable (RVV3\*1.0) laid between the two gates, which is reserved 3 meters after entering the wire hole;
2. Card reader cable: 1 piece (RVV4\*0.75);
3. Power line: each device must be configured with one 220V power line (RVV3\*2.5).
4. Background communication cable connected to access controller: one network cable (TCP/IP communication).

#### WARNING:

1. The synchronization cable and power line shall be laid away from the expansion screw fixing holes.
2. If the access controller is placed in the equipment room, pay attention to the cable routing between the card reader and the access controller. The cable should be laid from the card reader at both ends of the gate, instead of the middle movement position.

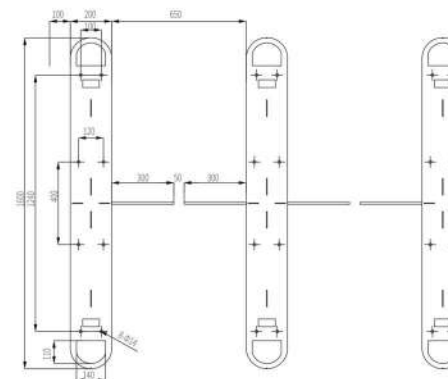
### NPKX-2



1. Aisle light
2. Access light
3. Lock top cap screw
4. Swing door
5. Side cylinder
6. Transmission cylinder
7. IR window
8. Top cap
9. Swiping card window



### NPKX-2



### Installation Instructions

1. The customer shall ensure the structural strength of the installation site.
2. All pipelines leading to the gate must be 120mm below ground level.
3. All specifications and dimensions shown in this product sample book are for reference only. Please contact us before installation.

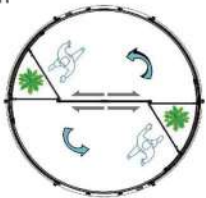
## Two-wing Automatic Revolving Door

### CS2A Series Two-wing Automatic Revolving Door

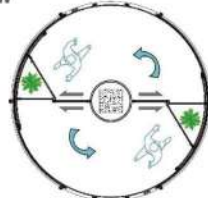


Item		CS2A-H Type with Display Case at Both Sides and Sliding Door in the Middle	CS2A-W Type with Columns Around	CS2A-Z Type with Display Case at Both Sides
Main dimensions	Revolving diameter (D) (mm)	2800-4800	3600-4800	2800-3600
	Sliding door opening width (mm)	1224-2224	1624-2224	1280-1680
	Access height (mm)	2200-3000	2200-3000	2200-3000
	Portal top cap height (mm)	300-600	550-600	300-600
Control drive device	Revolving speed	Standard revolving speed      Standard 3rpm (3-4rpm) In case of opening/closing at low revolving speed      Standard 2rpm (2-3rpm)		
	Revolving direction	Anti-clockwise		
	Safety protection device	Door body sensor	Position anti-pinch sensor	
		Auxiliary sensor	Emergency stop device	
		Revolving stop device	Low-speed revolving switch	
		Rubber anti-pinch sensor	Sliding door switch (label and doorbell purchased separately)	
Required power capacity	AC220V · 16A			
Operationable Standard maximum bearable wind speed	When the revolving door is in service: <25m/s When the sliding door is in service: <15m/s			

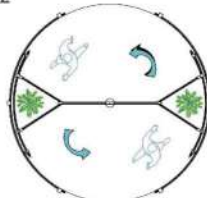
CS2A-H



CS2A-W



CS2A-Z



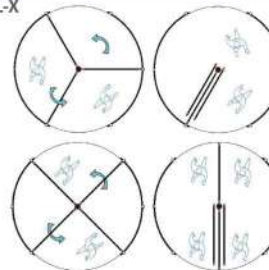
## Three/Four-wing Revolving Door

### RL Series Three/Four-wing Revolving Door

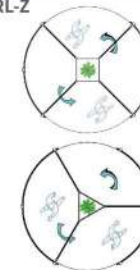


Item		RL-X (door leaf selectable with folding function)	RL-Z Type with display case in the middle	RL-W Type with Columns Around
Main dimensions	Revolving diameter (D) (mm)	1800-3600	2800-3800	3000-4200
	Three-wing access width (mm)	780-1680	1280-1780	1380-1980
	Four-wing access width (mm)	1195-2455	1895-2595	2035-2875
	Access height (mm)	2200-3000	2200-3000	2200-3000
	Portal top cap height (mm)	300-600	300-600	500-600
Control drive device	Revolving speed	Standard revolving speed      Standard 3rpm (3-4rpm) In case of opening/closing at low revolving speed      Standard 2rpm (2-3rpm)		
	Revolving direction	Anti-clockwise		
	Safety protection device	Door body sensor	Position anti-pinch sensor	
		Safety stop device	Rubber anti-pinch sensor	
		Emergency stop device	Low-speed revolving switch	
		Required power capacity	AC220V · 16A	
Maximum bearable wind speed (H=2200mm)	<20m/s			

RL-X



RL-Z



RL-W



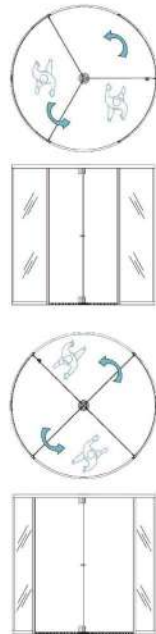


## Three/Four-wing Crystal Revolving Door



**SSJ-A**  
Three/Four-wing  
Crystal Revolving Door

Details			
Main dimensions	Revolving diameter (ID) (mm)	1800-3000	
	Three-wing access width (mm)	780-1380	
	Four-wing access width (mm)	1195-2035	
	Access height (mm)	2200-3000	
	Portal brim height (mm)	70 (probe internal mounted) 75 (probe external mounted)	
Control drive device	Revolving speed	Standard revolving speed standard 3rpm (3-4rpm) In case of opening/closing at low revolving speed Standard 2rpm (2-3rpm)	
	Revolving direction	Anti-clockwise	
	Safety protection device	Door body sensor	Position anti-pinch sensor
		Safety stop device	Rubber anti-pinch sensor
Emergency stop device	Emergency stop device	Low-speed revolving switch	
Required power capacity	AC220V · 16A		
Maximum bearable wind speed (H=2200mm)	<15m/s		



## Automatic Sliding Door

### Curve Automatic Sliding Door



#### Attractive Design of Curved Structure

It has the excellent characteristics of sliding automatic door, and creates a wonderful atmosphere with its curved structure. In the limited width of door body, the opening amplitude is significantly increased, which facilitates the miniaturization of the air removal chamber.



Device Model	VS-85	VS-150	VS-85	VS-150
Opening/closing type	Double-leaf sliding	Double-leaf sliding	Single-leaf sliding	Single-leaf sliding
Single door weight (kg) (leaf assembly)	75 × 2	100 × 2	75 × 1	100 × 1
Maximum applicable door body	max.2.6			
Single Door Area (DW × DH) (m <sup>2</sup> )	762~1067			
Single door DH/DW	max.3.0			
Average opening and closing speed	<0.4m/s			
Required power capacity	AC 220-2.5A			

※ The occasion which uses tempered glass

### Double Automatic Sliding Door



#### Same Door Width & Larger Effective Opening

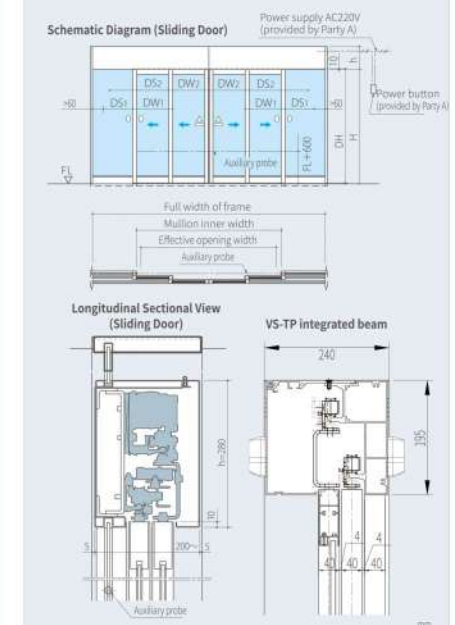
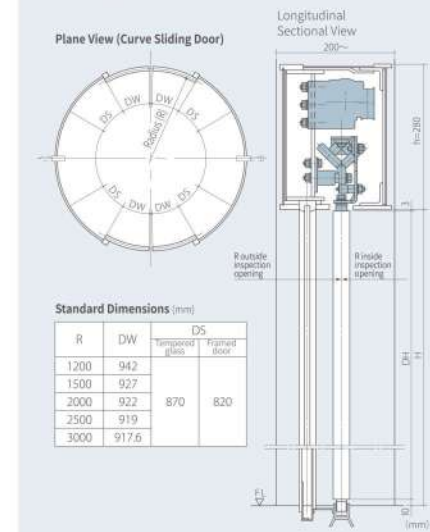
On the basis of the same door width, its opening width is 1.3 times of the general sliding door body, which is the advantage of double automatic sliding door. Narrow door area becomes wide after it is opened, and wide door area becomes wider after the door is opened. This kind of open and wide characteristics and smooth access feeling are well received by customers.



Device Model	VS-85	VS-150	VS-250	VS-85	VS-150	VS-250
Opening/closing type	Telescoping Double Doors			Telescoping Single Door		
Single door weight (kg) (leaf assembly)	55 × 4	100 × 4	165 × 4	65 × 4	100 × 2	325 × 2
Maximum applicable door body	max.7					
Single Door Area (DW × DH) (m <sup>2</sup> )	max.1.9	max.2.2	max.3.5	max.2.1	max.2.4	max.7
Single door with limit (mm)	500~650	500~1000	1000~1650	500~800	500~1000	1000~2000
Single door DH/DW	max.4.2					
Average opening and closing speed	<0.35m/s	<0.45m/s	<0.38m/s	<0.38m/s	<0.45m/s	<0.45m/s
Required power capacity	AC 220-2.5A	AC 220-5A	AC 220-2.5A	AC 220-2.5A	AC 220-5A	AC 220-5A

※ The single-door body width refers to the door body with stainless steel frame (door body coincidence size 6mm)  
Note: As for tempered glass door body and other door bodies, please make negotiation separately.

- The radius range is wide from 1200mm to 2500mm.
- The high-quality operation with microcomputer control ensures stable countermeasures play.
- The configuration of ultrasonic auxiliary sensor improves the safety of automatic door access.



For DS-250 details, please refer to Page T.

Note: As for tempered glass door body and other door bodies, please make negotiation separately.

### Floor Hinges

Model	NFH-100	NFH-150	NFH-220
Door leaf applicable width	800mm-900mm	1000mm-1150mm	1200mm-1400mm
Maximum load bearing of door leaf	100kg	150kg	220kg
Overall dimensions	270mm*126mm*49mm	306mm*162mm*54mm	310mm*124mm*58mm



### Floor Hinges

Name	Top holder	Upper holder	Lower holder	Bent holder	Lock holder
Model	DF-11	DF-12	DF-13	DF-14	DF-15
Door weight specification			<200KG		



### Door Closer

Model	NFH-300
Door leaf applicable width	800mm-900mm
Maximum load bearing of door leaf	100kg
Series	ENS



### Ground Lock

Model	NDL-12
Image	



### Middle Lock

Model	NDL-11
Image	



### NS-AO1 IR Sensor

It is a kind of automatic door probe that integrates Japanese technology, peace of mind, safety and comfort.

Detection mode	Near infrared reflection mode (dynamic & static induction)
Maximum installation height	4.0m
Maximum detection area	5.2m width × 3.3m depth (reference value)
Power consumption	<DC12V 120mA
Remarks	Set in independent area setting, corresponding to the irregular doors; have self-diagnosis and non-contact induction functions; be configured with snow and insect prevention countermeasures as well as environmental protection mode.



### NS-AO2 IR Sensor

It is a kind of automatic door probe that integrates Japanese technology, peace of mind, safety and comfort.

Detection mode	Near infrared reflection mode (dynamic & static induction)
Maximum installation height	4.0m
Maximum detection area	5.2m width × 3.3m depth (reference value)
Power consumption	<DC12V 120mA
Remarks	Set in independent area setting, corresponding to the irregular doors; have self-diagnosis and non-contact induction functions; be configured with snow and insect prevention countermeasures as well as environmental protection mode.



### NS-AO4 Ceiling Sensor

As a ceiling mounted product, it can be installed on the ceiling close to the door body, thus expanding the design freedom. In addition, it is integrated with ceiling, spotlights to improve the overall aesthetics. Based on its convenient installation and dismantling, it is another popular sensor after the beam-mounted type.

Detection mode	Near infrared reflection mode (dynamic & static induction)
Maximum installation height	4.0m
Maximum detection area	3.2m width × 3.2m depth (reference value)
Power consumption	<DC12V 70mA
Output capacity	DC240V /0.25A (resistive load)
Remarks	Have self-diagnosis function



### NH-721 Ceiling Sensor for Super High Door

It is specially used for super high doors up to 5m, and is installed on the ceiling.

Detection mode	Near infrared reflection mode (dynamic & static induction)
Maximum installation height	4.0m-5.0m
Maximum detection area	5.2m width × 3.3m depth (reference value)
Power consumption	Less than 120mA in case of DC12V
Output capacity	DC50V 0.1A (resistive load)
Remarks	Set in independent area setting, corresponding to the irregular doors; have self-diagnosis and non-contact induction functions; be configured with snow and insect prevention countermeasures as well as environmental protection mode.



### H-86 IR Sensor

It focuses on the design aesthetics and is featured with high-density and wide detection area.

Detection mode	Near infrared reflection mode (dynamic & static induction)
Maximum installation height	2.0-4.0m
Maximum detection area	3.1m width × 1.77m depth (reference value)
Power consumption	<DC12V 110mA
Remarks	Corresponding to irregular doors; have self-diagnosis function; Full color LED light action, providing easy understanding.



### NH-203B IR Sensor

It detects objects through the reflected invisible light. Based on its quick detection, it can detect both dynamic and static objects. It is a kind of product widely used in Japan.

Detection mode	Near infrared reflection mode (dynamic & static induction)
Maximum installation height	3.0m
Maximum detection area	4.0m width × 3.2m depth (reference value)
Supply voltage	12-110V AC/DC±10%
Power consumption	<2.0W (-SVA/AC)
Output capacity	< AC/DC50V0.25A (resistive load)
Remarks	Have self-diagnosis function





## HW-TC Touch Sensor

There is a small wireless transmitter installed in the touch pad. The wireless touch sensor is a touch pad mounted on the automatic door by tapping it, and the radio wave is transmitted from the information output part of the touch pad to the receiver connected to the door opening and closing device, so as to realize the opening and closing of automatic door. The opening and closing device from the touch pad to the door body doesn't need to be installed with signal cable, so it reduces the trouble of cable moving and connection, and you only need to drill the installation hole during processing.

Detection mode	Presurization detection (compression plate)
Information mode	Radio wave (310MHz)
Maximum detection distance	5.0m
Maximum detection area	Receiver: <AC80-20V 2VA, <DC12/24V50mA Transmitter: 7# alkaline battery
Output capacity	Output contact 1A DC50V/0.1A (resistive load)
Remarks	The battery life of transmitter is about 3 years (SRD times of use per day), antibacterial specifications.



## HW-NC Proximity Sensor (Non-contact)

- Non-contact switch reduces cross spread of bacteria, which is more hygienic;
- Microcomputer control chip built in, with power-on self-test function;
- Designed with special infrared coding, so not susceptible to external infrared light interference;
- Adjustable sensing distance (3-12cm), be configured with two-color status indicator;
- The output signal holding time adjustable (0.5-20s) or of inching mode (VR to the rightmost).



## APS-A10 Control Switch

- Color LCD display, providing excellent vision for door opening and closing;
- Can quickly and easily change the door status, such as opening/closing speed and opening holding time and so on;
- Can quickly access to door details, making maintenance and troubleshooting easier and faster;
- Multiple languages available, including Chinese, English, Korean, Thai, Vietnamese, Indonesian and Russian.
- Dimensions: 88 X 88 X 15.5 mm



## Light-curtain Auxiliary Sensor

This is a light-curtain auxiliary sensor composed of 79 infrared rays at most. As long as any one of the infrared rays is blocked, the door body will automatically open, thus realizing all-around induction from the bottom up.

Detection mode	Dynamic, static detection (multiple light rays)
Maximum detection distance	3M (2.4m when the protection film is used)
Power consumption	DC18-30V
Output capacity	60mA



## Program Switch

A small wall-mount switch is added to make the automatic door be used more easily. This new type of switch is simple to operate, and can be switched repeatedly at will according to the needs of users. Besides, its security protection with a lock can effectively prevent irrelevant personnel from changing its operation mode.

- 5-mode switch:
- 1) AUTO: general mode
  - 2) F-OPEN: open holding mode
  - 3) ONE WAY: one-way access mode
  - 4) P-OPEN: half open mode
  - 5) CLOSE: closed holding mode



PGS-C(85\*85)



PGS-CL(135\*45)

## SKD-T10U Electronic Lock

Input power supply	AC100V/1A
Minimum work current consumption	Starting state: 900mA Normal state: 350mA
Door lock delay time	0-9s (can be set by the user), factory value: 2.5s Used to trigger automatic door, normally open contact output (N/O) to without 1A current.
Signal output	(1) Power-off open safety electronic lock; (2) There is optical coupling opening input button contact built in. If the door is not opened within 5 seconds, it will automatically be locked again.
Safety measures	After the sensor detects the electronic lock stopper, the signal holding time can be adjusted on the electronic lock.
Sensor signal delay time	



## NP-01 Auxiliary Sensor

The starting sensor of automatic door is mainly used to start the equipment, while the auxiliary sensor is to protect the object passing or staying in the door body from being pinched, thus improving the safety of automatic door.

Detection mode	Dynamic, static detection (single light ray)
Installation height	Standard FL (ground)+600
Maximum detection area	Light projector/receptor distance 5.0m
Power consumption	<DC12V 50mA
Output capacity	Collector output DC30V 0.1A (resistive load)



## FT-10/N10 Kicking Sensor

Facilities related to hospitals and food can use the kicking sensor to open automatic doors. The kicking sensor is usually suitable for airtight doors (MAX series) and ordinary medical automatic doors.

Detection mode	Photoelectric mode
Operation mode	Foot inverting
Power consumption	<AC100V 2VA
Output capacity	AC100V 0.5A (resistive load) DC24V 1.0A (resistive load)
Remarks	Operating force ON



## PL-T10U Driven Pulley Lock

The driven pulley electromagnetic lock locks the special drive belt of automatic door, so as to keep the automatic door leaf closed. Since its components operate with low sound and low failure rate, it can be used safely.

Unlock feature	Power failure release
Unlock construction	Electromagnetic lock
Input signal	1A current, automatic door linking
Indicator light	Release light red, displayed on the controller
Unlock monitoring output	No voltage A power supply
Remarks	Be used with PLC-N controller



## EBS Backup Power

EBS is the emergency power supply device for DS series and NET-VS series automatic doors. In case of power failure or emergency signal (DC24V) input, the drive power of the automatic door is provided by the built-in power supply to keep the automatic door open (or closed). After the normal power supply is restored, the automatic door will be restored to the state before power failure, and after the emergency signal is released, the reset switch will be switched on to return to the normal state of use.

Features:

- The device is built in the electromechanical beam, with the features of compact structure and convenient installation.
- You can choose to provide normally open or normally closed signal to the automatic door in case of power failure or emergency signal input, so that the automatic door is open or closed.
- The charging and power working status LED indicators are set on the body, which is convenient to confirm the power supply status and battery working status.
- The emergency power supply adopts small fully-sealed and maintenance-free Ni-Cd battery.



## Switchable Glass

It is suitable for offices, meeting rooms, operating rooms and other private places. When the switch is ON, the glass is transparent and can be seen through. When the switch is OFF, the glass is of frosted mist and cannot be seen through.







CE Certification



ISO9001



ISO14001



ISO45001



TUV Certification



EWC Certification



Test Report of Automatic Emergency Evacuation Door



Airtight Door Testing Based on European Standard - Hong Kong Curtain Wall Testing Centre Ltd.



Airtight Door Certification - Japan Testing Center for Construction Materials

Transportation (Airports, Train Stations & Bus Stations)



Beijing Capital International Airport



Beijing Daxing International Airport



Shenyang Taoxian International Airport



Harbin Taiping International Airport



Tianjin Binhai International Airport



Vietnam Phu Bai international airport terminal 2



Vietnam Da Nang International Airport



Hangzhou Xiaoshan International Airport



Shanghai Pudong International Airport



Shanghai Hongqiao International Airport



Korea Incheon International Airport



Nanjing High-speed Railway Station

Hospitals



Beijing Cancer Hospital



Beijing Tsinghua Hospital



Shanghai Renji Hospital



Shanghai Sixth People's Hospital



Shanghai Deda Hospital



Shanghai Jiahui International Hospital



Korea Samsung hospital



Affiliated Hospital of Harbin Medical University



Korea Hospital Yonsei University Health System



Malaysia Island Medical City



Thailand Ruamjaiarak Hospital



Indonesia Rumah sakit universitas indonesia



# Project reference of Nabco Automatic door

## Residences



Shanghai Yanfeng  
East Suburb Garden Landscape



Sunzhou Hefeng Yazhi



Hangzhou Wulin No.1



Zhengshang Smart City  
Wisdom Garden



Zhengzhou Zhengshang  
Smart City Experience Area Outside



Zhengzhou Zhongzhou  
City Lily Garden Entry Door Outside



Zhengzhou Yongwei  
Community Gate



Yaxin Wisteria Mansion  
Sales Office

## Supermarkets & Convenience Stores



Tesco



Vietnam AEON Mall Ha Dong



Vietnam AEON Mall Hai Phong



Haikou Carrefour Supermarket



Vietnam SC VivoCity  
Shopping Mall



Lawson Convenience Store



Sam's Club Store



Beijing Sanlitun Uniqlo Store

## Public facilities & Factories



Guangqi Honda Factory  
Suzhou Eisai



Vietnam Capital place



Daiichi-Sankyo  
Pharmaceutical Factory



Tianjin FAW Toyota Co., Ltd.



Ministry of Railways  
Settlement Center



Shanghai No.2 Intermediate  
People's Court



Guiyang Customs



Vietnam muRata factory

## Hotels



Beijing Sheraton Hotel



Crowne Plaza Beijing  
Chaoyang U-Town



Ramada Shanghai Hotel



Hangzhou City Square Hotel



Grand Mercure Hotel  
Front Door



Xiamen Grand Kempinski  
Hotel



Macau Galaxy Hotel



Jiujiang Hotel

## Office Buildings & Shopping Malls



Vietnam BRG Tower



Vietnam FLC Sea Tower  
Quy Nhon



Shanghai World Financial  
Center



Shanghai HSBC Center



Binhai International  
Convention and Exhibition Center



Hangzhou Yinxinhui Building



Guangdong Qingyuan  
Lexus 4S Shop



Hangzhou Yongan Building

## Revolving Doors



Xiamen Ruida Financial  
Center



Dalian Development Zone  
Management Committee



Vietnam La Festa Phu Quoc



Vietnam Sun World Ba Na Hills



Shanghai Zhendan Building



Shanghai Bank of China Tower



Jinzhou Public Security Building



Xi'an Xianyang  
International Airport Customs



## Development History

- 2023** Nabtesco 20th anniversary
- 2019** Production of NABCO Automatic Doors was reached at 2,500,000 units
- 2011** Entered the European market by Gilgen
- 2005** Nabco Autodoor (Beijing) Co., Ltd. was established and operated solely by Japan.
- 1995** Entered the mainland China market by NABCO Autodoor Beijing
- 1992** Entered the North American market by NABCO Entrances
- 1986** Lusca product of Japan Nabtesco was selected as "GOOD DESIGN" product by the Ministry of International Trade and Industry for the first time in the industry.
- 1963** Japan Nabtesco sold hydraulic automatic sliding door device "Mini Super".
- 1961** Japan Nabtesco sold air automatic sliding door device DP model.
- 1957** Japan Nabtesco established three-major-sales-company system.
- 1956** Automatic door Japanese domestic No. 1 machine was set.
- 1953** Japan Nabtesco established automatic door technology cooperation with USA.

## Company Profile of NABCO

NABCO manufactured the first automatic door in Japan and is now the major automatic door manufacturer in the world. NABCO has No.1 market share approximately 50% in Japan over the years. Since NABCO manufactured the first automatic door in Japan in the 1950s, NABCO have developed a vast range of products for different applications and provided best services to our customers, which has made NABCO the "Only One" automatic door solution provider.

## Global Business

NABCO is a global automatic door enterprise that manufacture and sell automatic doors with Asian network and 3 subsidiaries, NABCO Entrances Inc. in North America, Gilgen Door System AG in Switzerland and NABCO Auto Door (Beijing) Co., Ltd. in China.

## Product Line-up

Automatic doors provide a convenient and comfortable access solution to various environments and extra benefits to the spaces and users such as energy saving, hygiene control, and barrier free. Based on its track record of developing products from the customer's point of view, NABCO has been striving to develop products which provide useful benefits to meet the customers' needs under the slogan "Pedestrian Flow Solution."



Nabco Headquarters in Japan



Konan plant in Japan



Nabco Autodoor (Beijing) Co., Ltd.

Nabco automatic doors and sensors are developed and designed with the basic concept of "human safety and comfort", but unexpected accidents can also occur if not used properly.

In order to ensure the safety and comfortable use of automatic door device, please read the product instructions carefully before using the device. We hope it will become your eternal companion in the life.



### Please set the auxiliary sensor.

The automatic door device is composed of door frame, suspension structure, drive device, control system, sensing device and so on. The control system properly controls the operation of automatic door through the cooperation of starting induction and auxiliary induction devices.

The Japanese National Automatic Door Association clearly stated in the "safety policy" that "In order to ensure the safety of passerby, auxiliary sensors need to be set." The automatic door auxiliary sensor is treated as the standard configuration in all Nabco products. Please read above content for understanding when designing and purchasing this product.

### To property management staff

In order to remind passerby to pay attention to the safety, please paste "autodoor sign" and "warning sign" on the automatic door.



Warning Sign



Automatic Door Sign

## Safety Requirements for Automatic Doors

### 1. Please don't stop at the door.



Because it is not easy to detect the presence of someone between the door bodies, the door body may be improperly closed due to the sensor judgment error, thus resulting to pinching accident. Therefore, don't stand and talk in the doorway.

### 4. Please don't hold the door with hand.



Please don't lean on the door or pull the door with your foot. Your hand is easy to be pinched at the door edge and corner during door opening and closing. Please be careful.

### 2. Please don't enter the door quickly.



The sensors can sense the presence of person, but cannot immediately make the door open. Don't thrust yourself in before the door is fully open or when the door is in the process of closing.

### 5. Please don't play at the door.



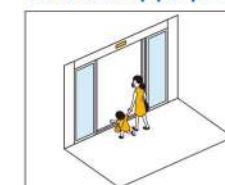
Children always feel that the door opening and closing is interesting, so they play nearby. Once their hands are pinched by the door, it is very dangerous. Please remind them timely if you find any children playing nearby the door.

### 3. Please don't enter the door from diagonal direction.



The oblique plane and side plane of the door body are the dead angles of sensor, which may cause people to collide with the door body due to the slow opening and closing of the door body. Therefore, please pass the automatic door from the front.

### 6. Please help people in need.



Adults should hold their hands when children pass through automatic doors. When the elderly and disabled pass through the door, people around should take the initiative to help them.