

Door leaf option

3 types of door leaf are selectable for your best environment

Aluminum



Stainless steel



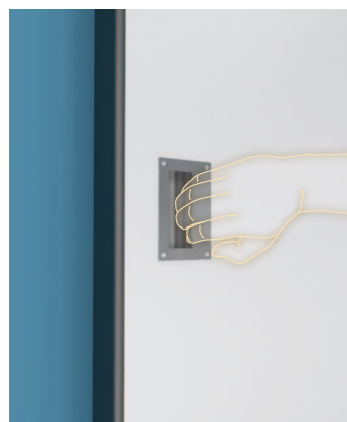
Glass



Handle option

3 types of handles are selectable for power failure

Recessed handle



Tubular handle

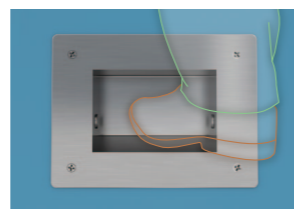


Lever handle



Detection device (Option)

Foot switch



For hands-free opening.

Touch-less switch



For touch-less opening.

Window option

3 types of window are selectable for your best environment

Aluminum frame



outside



Inside (flat frame)

Stainless steel frame

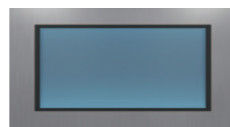


outside



Inside (flat frame)

Double-sided flat frame



Flat frame prevents the accumulation of dust.

NAX

NABCO Hermetic Door

NABCO's hermetic door with high air tightness, aesthetic and safety

Nabtesco Corporation

Accessibility Innovations Company

Address : JA Kyosai Bldg., 7-9,
Hirakawacho 2-chome,
Chiyoda-ku, Tokyo,
102-0093, Japan

Phone : +81(0)3-5213-1157
Fax : +81(0)3-5213-1173

<http://nabco.nabtesco.com/en/>



ISO9001 / ISO14001 Certified



For further details, contact:

All specifications herein are subject to change without notice
CAT.No. D661 0201 1408 02SE



NABCO's new hermetic door with **high air tightness, aesthetic and safety**. With the **original hermetic mechanism**, NAX provides high air tightness in a optimal way for various scenes.

Air Tightness

- High class of air tightness
- 【JAPAN】 JIS A 4702:Class A-4 ≒ 【EU】 UNE-EN 12207:Class 3

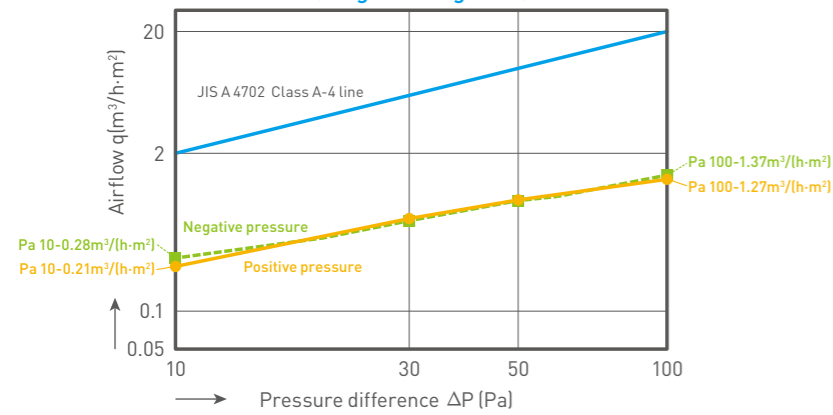
Aesthetic

- Smallest header size in the industry
- Wide range of door leaves and handle (*Pls. refer to back page.)

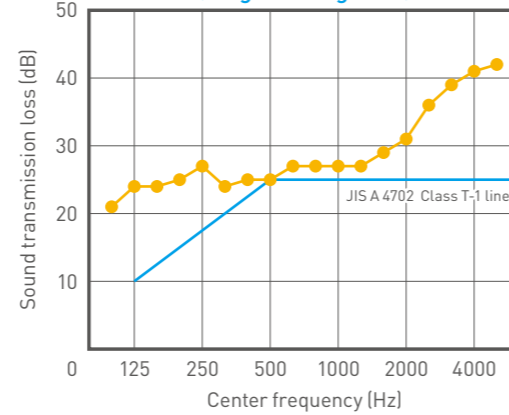
Safety

- Possible to be fully opened without any clearance left
- Easy to open manually in case of a power failure

NAX Airtightness performance (Single sliding door)



NAX Sound insulation performance (Single sliding door)



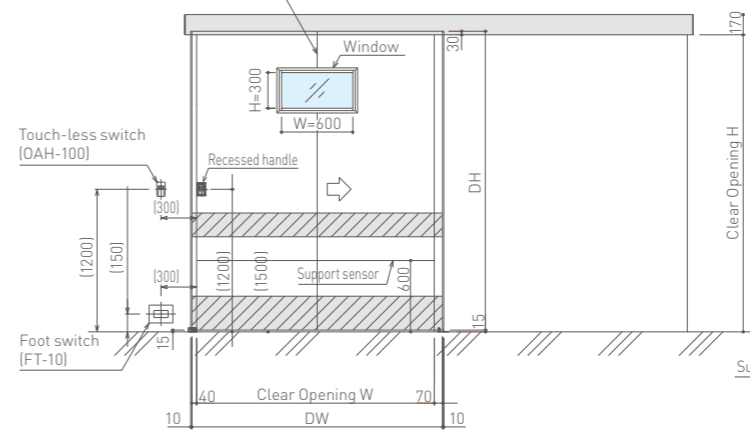
Example of use

- **Operating room** Requires high air tightness
- **Radiotherapy room** Requires X-ray shield
- **Food factory** Requires hygiene management (HACCP)
- **Warehouse/Factory** Requires air conditioning
- **Conference room** Requires sound insulation

Dimension

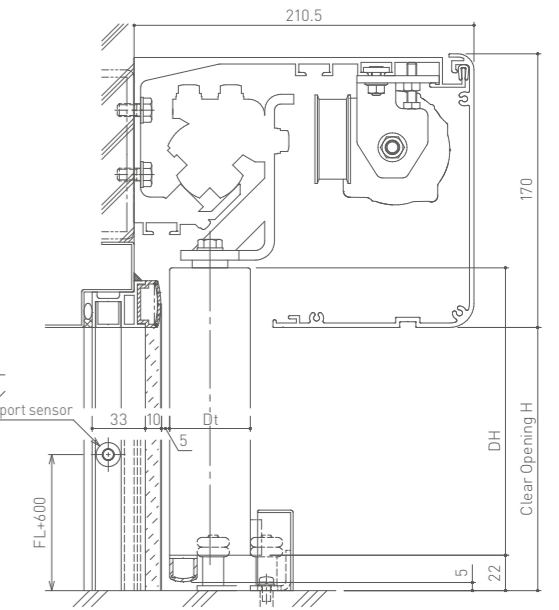
● Elevation

【Stainless steel】There is a joint line when the door width is over 1100.
【Aluminum】There is a joint line when the door width is over 1400.



Unit: mm

● Section



Specification

Use applications		Air tightness + Sound insulation		Air tightness + X-ray shield	
Door panel		Aluminum/Stainless steel/glass		Aluminum	Stainless steel
Door type		Single	Bi parting	Single	Single
Clear Opening (mm)	Width (W)	700 - 2000	1200 - 2800	700 - 1600	700 - 1100
	Height (H)	1900 - 2500	1900 - 2500	1900 - 2500	1900 - 2500
Max Weight		150kg			
Opening Speed		up to 0.7m/s			
Hold Open Time		adjustable			
Ambient Temperature		-10°C - 50°C			
Power Supply		230VAC +6/-10% 50/60Hz Note: with transformer specified by NABCO			
Power Consumption		45Wh			
Relative Humidity		20% - 85% RH			
Air Permability		A-4 [JIS A 4702] ^{*1}			
Sound Insulation		T-1 [JIS A 4702] ^{*2}		T-1 [JIS A 4702] ^{*3}	
X-ray Shield		-		○ (Lead palte 2mm)	
Electric lock		○			

*1 Single door usage

*2 Single type of glass panel has T-2 class of sound insulation. If T-2 class is required for single type of aluminum/stainless panel, please contact our sales distributor.

*3 Calculated value