

C160 RWA

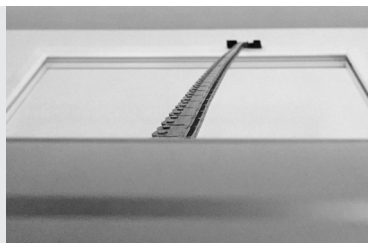


Chain actuator
Thrust force 300N
Stroke 360mm - 600mm - 1000mm

PRODUCT DESCRIPTION

Electric actuator Topp model C160 RWA with double-link chain, in an elegant die-cast aluminium profile, complete with brackets and accessories for bottom hung windows outward opening for smoke evacuation application. Operation at 24V DC. Max. thrust force 300N. Stroke 360 - 600 - 1000 mm. Electronic end of stroke in closing by current absorption control.

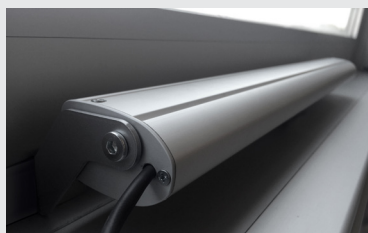
CE marked device, tested in accordance with the EN12101-2 Standard for smoke ventilation applications (360mm and 600mm strokes).



Elegant and attractive aluminium profile with swivel brackets for large openings.



Available also for installation on side hung windows.



Long chain up to 1 meter enclosed in a slim housing.



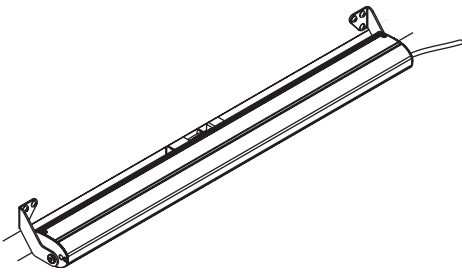
TECHNICAL SPECIFICATIONS

C160 RWA stroke 360 mm C160 RWA stroke 600 mm C160 stroke 1000 mm

Power voltage	24V d.c.	24V d.c.	24V d.c.
Max applicable load in thrust	300 N	250 N	50 N
Max applicable load in traction	200 N	200 N	200 N
Stroke for top-hung application	360 mm	600 mm	1000 mm
Stroke for bottom-hung application	322 mm	562 mm	962 mm
Absorbed current	0,43 A	0,60 A	0,60 A
Idle translation speed	7,5 mm/s	10 mm/s	10 mm/s
Duration of the idle stroke *	48 s	60 s	100 s
Service type	S2 of 4 min	S2 of 4 min	S2 of 4 min
Operating temperature	-15°C + 50°C	-15°C + 50°C	-15°C + 50°C
Protection Class	IP 30	IP 30	IP 30
Stroke end regulation in closure	not necessary	not necessary	not necessary
Parallel connection option	YES	YES	YES
Possibility of installing double push point on the same window	YES	NO	NO

Electronic in opening, by amperometric absorption in closing

* For RWA application: max opening time required 60s.



C160 RWA 1 push point

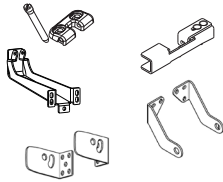
3E22#	C160 chain actuator 24V stroke 360mm bottom-hung outward opening
3E22#	C160 chain actuator 24V stroke 360mm bottom-hung inward opening
3E22#	C160 chain actuator 24V stroke 360mm top-hung application*
3E22#	C160 chain actuator 24V stroke 360mm outward swinging application
3E22#	C160 chain actuator 24V stroke 360mm inward swinging application
3E21#	C160 chain actuator 24V stroke 600mm bottom-hung outward opening
3E21#	C160 chain actuator 24V stroke 600mm bottom-hung inward opening
3E21#	C160 chain actuator 24V stroke 600mm top-hung application*
3E21#	C160 chain actuator 24V stroke 600mm outward swinging application
3E21#	C160 chain actuator 24V stroke 600mm inward swinging application
3E23#	C160 chain actuator 24V stroke 1000mm bottom-hung outward opening
3E23#	C160 chain actuator 24V stroke 1000mm bottom-hung inward opening
3E23#	C160 chain actuator 24V stroke 1000mm outward swinging application
3E23#	C160 chain actuator 24V stroke 1000mm inward swinging application

*CS1 chain anti-closing accessory for top-hung application included.

Description of the standard pattern, 1 push point

Application bottom hung windows outward opening

3E21#	C160 chain actuator 24V stroke 600mm Iron hooking device for top-hung and bottom hung (outwards opening) for C160 600/1000 mm stroke Couple of swivel frontal brackets C160
-------	--



Accessories and spare parts

3E2012	Hooking device for top-hung and bottom hung (outwards opening) for C160 360 stroke
3E3100	Iron hooking device for top-hung and bottom hung (outwards opening) for C160 600/1000 stroke
1E2804	C160 bottom-hung bracket for single push point
3E2100	Brackets for top-hung/bottom-hung outwards opening application
3E2101	Brackets for bottom-hung fallback application

