

HDS-A5

Push Button Switch

For Barrier-free Toilet Door Unit

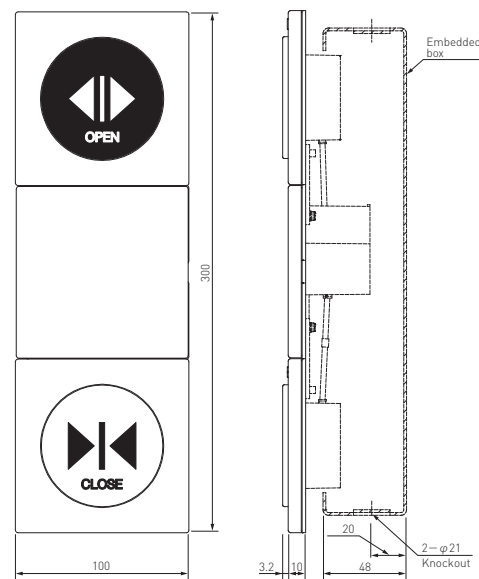
Universally designed door operation switch for public toilets achieves both harmony with toilet space and usability



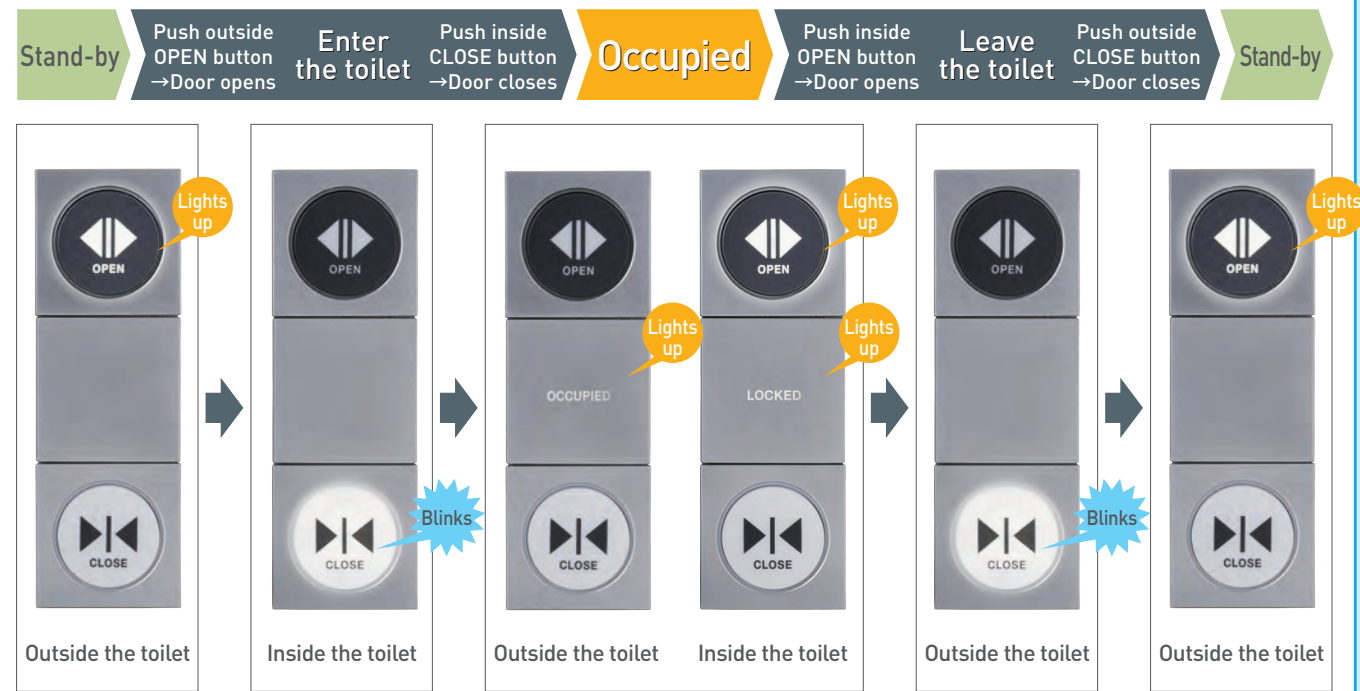
Specification

| | |
|-------------------------|---|
| Product name | HDS-A5 Push Button Switch |
| Detection method | Pressure detection (Push-button type) |
| Operation force | Approx. 6.5N |
| Indicator light | White LED |
| Installation | Stand-by: Off Occupied: On Embedded in the wall ※Option: exposed on the wall |
| Dimension (mm) | [Switch] W100×H300×D13 [Embedded box] W80×H280×D48 [Exposed box] W100×H300×D48 |
| Material | [Switch] ABS resin [Embedded box] SPCC (Steel black painting) [Exposed box] SPCC (Steel metal painting) |
| Remark | Mountable vertically or horizontally |
| Audio guidance | Speaker built-in |

Dimensions (mm)



Operation image



HDS-A5 Push Button Switch

For Barrier-free Toilet Door Unit

Universally designed door operation switch for public toilets achieves both harmony with toilet space and usability



Nabtesco Corporation

Accessibility Innovations Company

Address : JA Kyosai Bldg., 7-9,
Hirakawacho 2-chome,
Chiyoda-ku, Tokyo,
102-0093, Japan

Phone : +81(0)3-5213-1156
Fax : +81(0)3-5213-1173



ISO9001 · ISO14001 Certified



For further details, please contact:

All specifications herein are subject to change without notice

CAT.No. D000 0000 0000 00R1

<https://nabco.nabtesco.com/en/>

For Barrier-free Toilet Door Unit HDS-A5 Push Button Switch

Universal design



[Inside]

Intelligibility and Usability

Universally designed from a multiple perspectives by incorporating expert opinions and conducting various verifications, the door operation switch is easy for anyone to use and thus is friendly to all users.

※Barrier-free Toilet shown above is RESTROOM ITEM01 manufactured and sold by TOTO LTD. in Japan.

Intelligibility

■ Guidance by illumination and sound

- The button to be pushed next lights up
This helps users push the correct button instinctively.
※See the illustrative image of the operational flow on the reverse side.
- Pushing button makes beep sound for confirmation of operation
- Step-by-step audio guidance is provided
Four languages are selectable. (English/Japanese/Chinese/Korean)

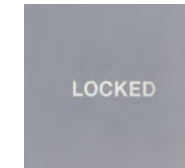


■ Due consideration for visual impairment

- Due consideration for the visually impaired people
The font and layout were designed with care for people with visual impairments. The slightly raised buttons allow users to find them easily by touch.
- Higher visibility for people with red-green color vision deficiency
Black push-buttons and white ones are used in combination to make them easily recognizable also for people with color vision deficiency. The characters are displayed only when the toilet is in use, thereby clearly showing whether it is occupied or not.



When the toilet is not occupied



When the toilet is occupied/locked
[The inside indicates 'Locked']



Usability

■ Due consideration to people in wheelchairs and the elderly

To make the buttons easier to push, each button has a large diameter of 70 mm.
Even users with physical disabilities can push the buttons easily and reliably with minimal force.



*Safety functions

The operation unit can be connected to an emergency call switch, allowing the door to be opened manually.
In addition, the door can be opened from the outside using the key switch.

Note: Please refer to the user manual for the wiring method

